

# ADXL326

5V Triple-Axis Accelerometer (-+16 analog out)

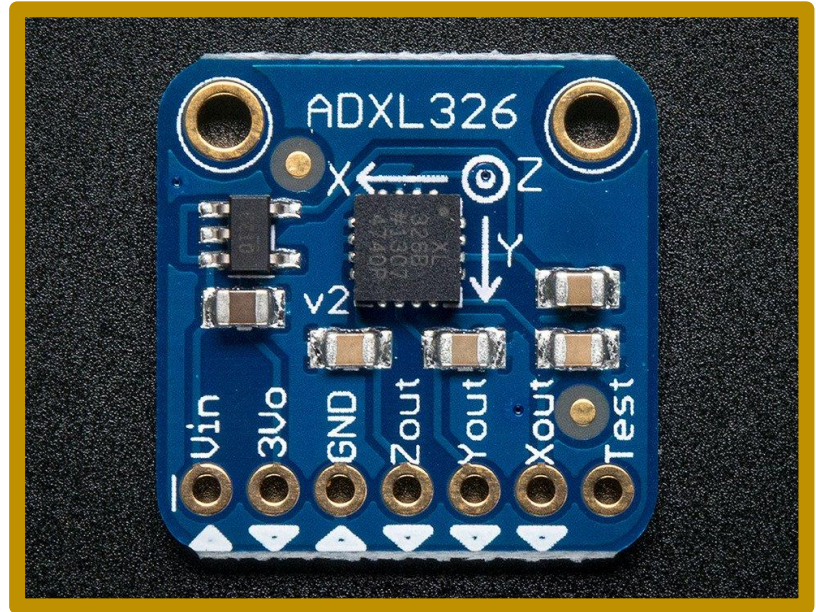
Samantha M. Moran, Leonardo Javier Rodriguez Gutierrez, Daniel Jiang  
PHYS 398-DLP

# Specifications

5V - intended interface with Arduino or similar

Features on-board 3.3V regulator

3 analog output: X, Y, and Z axes



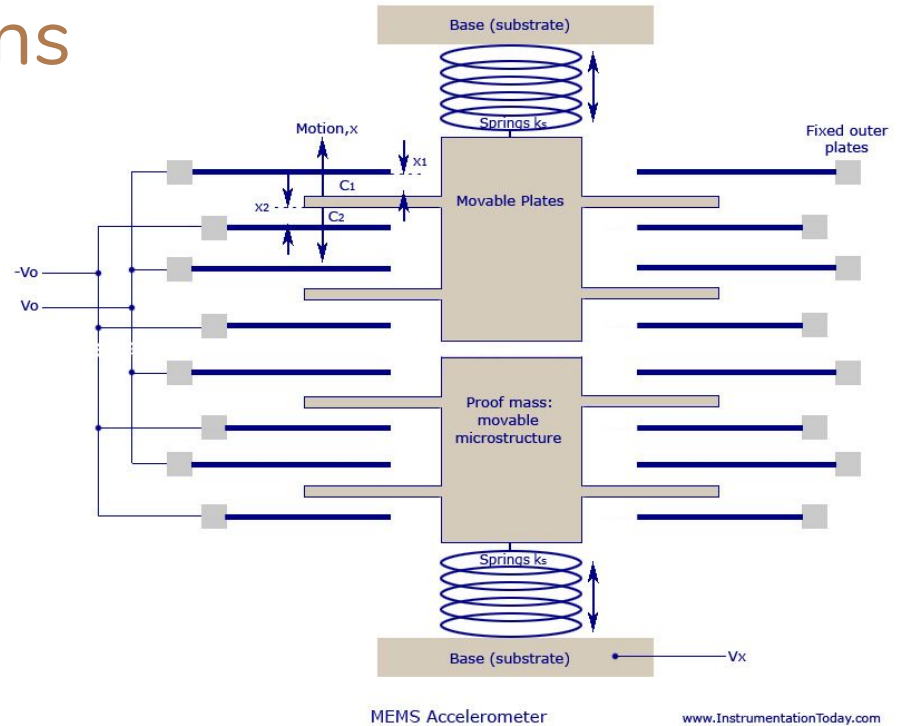
# Method of Operations

Micro-Electro-Mechanical Sensors (MEMS)

Small suspended mass embedded in the chip

Experiences external acceleration

Capacitor

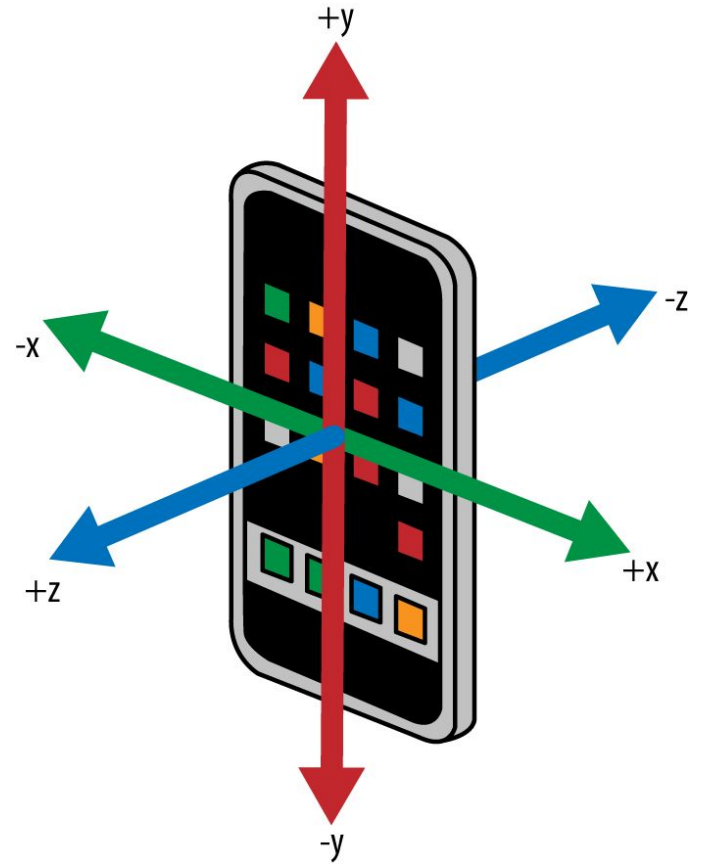


# Applications and Purpose

Robotics

Satellites

Smart Phones



# References

<https://www.adafruit.com/product/1018>

<http://www.sensorwiki.org/doku.php/sensors/accelerometer>

<http://www.instrumentationtoday.com/mems-accelerometer/2011/08/>