

Object Recognition and Augmented Reality



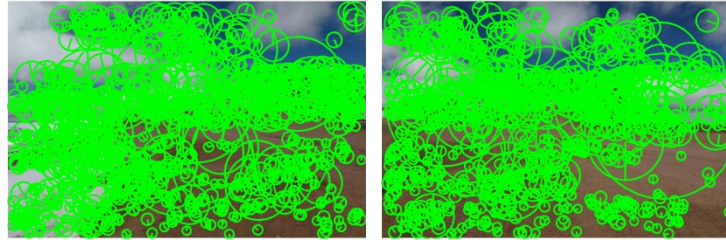
Magritte, *The Treachery of Images*

Computational Photography

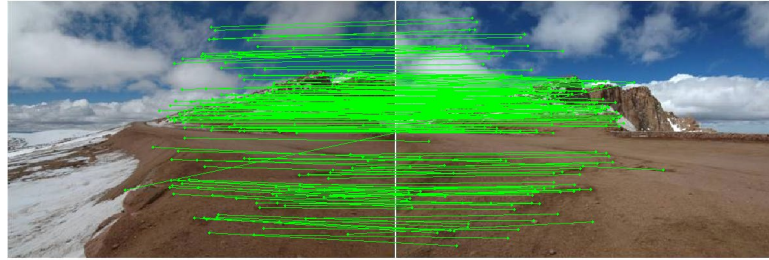
Derek Hoiem, University of Illinois

Last class: Image Stitching

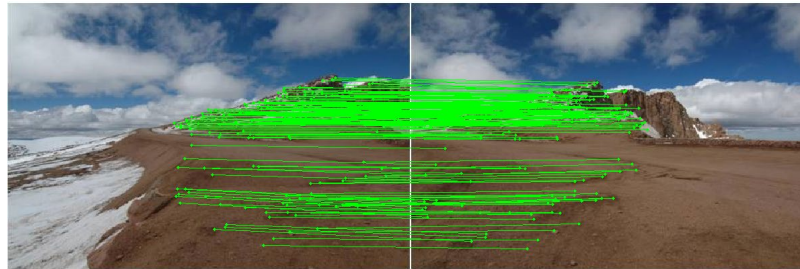
1. Detect keypoints



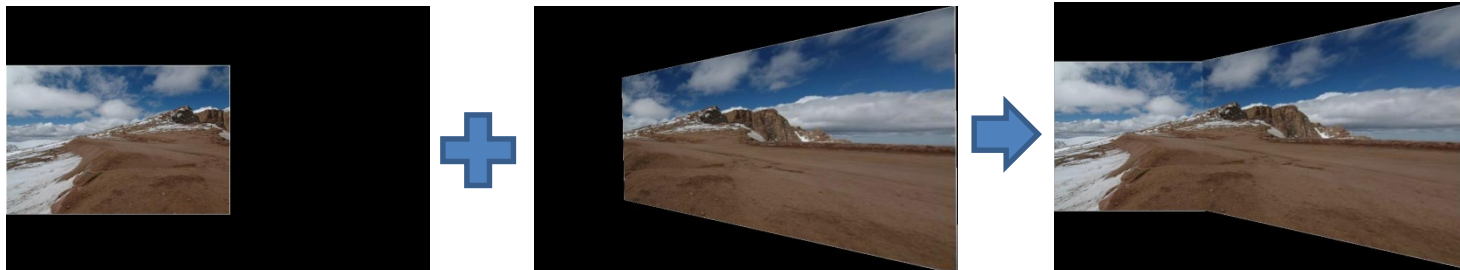
2. Match keypoints



3. Use RANSAC to estimate homography



4. Project onto a surface and blend



Project 5: coming up

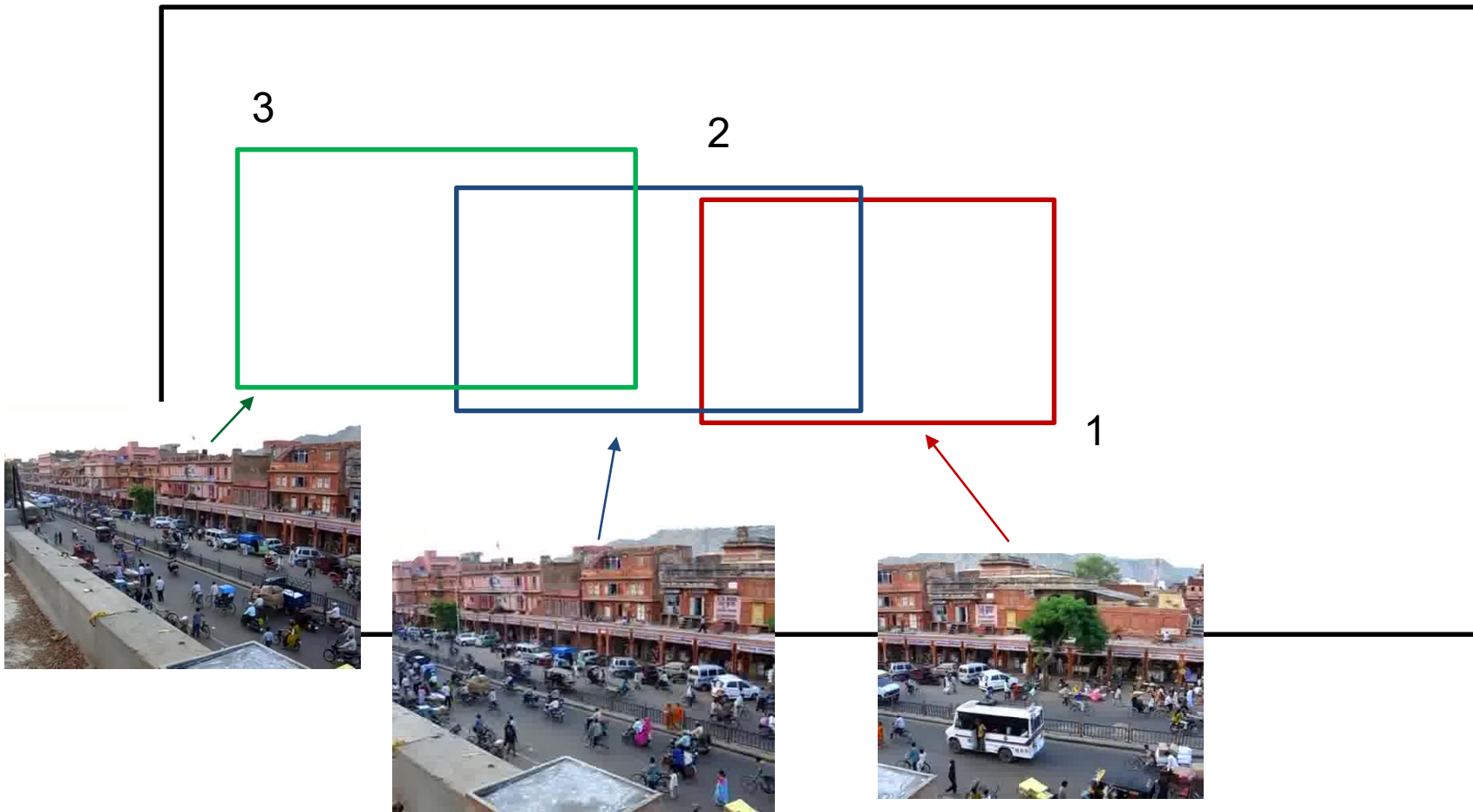
1. Align frames to a central frame
2. Identify background pixels on panorama
3. Map background pixels back to videos
4. Identify and display foreground pixels

Lots of possible extensions for extra credit

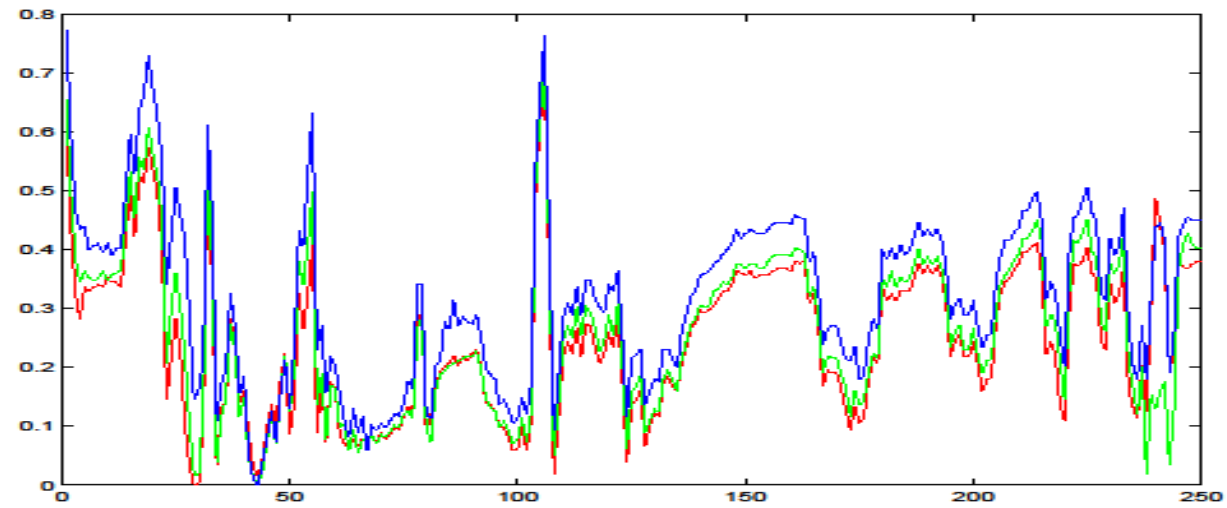
Aligning frames

$$x_1 = H_{21}x_2$$
$$x_2 = H_{32}x_3$$

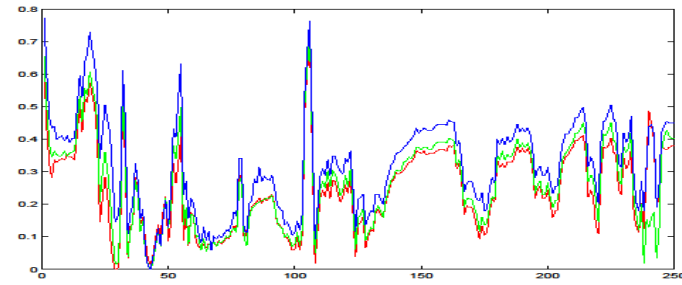
$$x_1 \stackrel{?}{=} x_3$$



Background identification

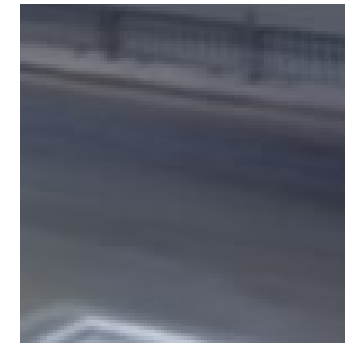


Background identification



Idea 1: take average (mean) pixel

- Not bad but averages over outliers



mean

Idea 2: take mode (most common) pixel

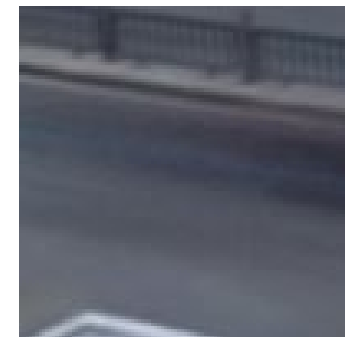
- Can ignore outliers if background shows more than any other single color



mode

Idea 3: take median pixel

- Can ignore outliers if background shows at least 50% of time, or outliers tend to be well-distributed



median

Identifying foreground

1. Simple method: foreground pixels are some distance away from background
2. Another method: count times that each color is observed and assign unlikely colors to foreground
 - Can work for repetitive motion, like a tree swaying in the breeze

Augmented reality

- Insert and/or interact with object in scene
 - [Project by Karen Liu](#)
 - [Responsive characters in AR](#)
 - [KinectFusion](#)
- Overlay information on a display
 - [Tagging reality](#)
 - [HoloLens](#)
 - [Google goggles](#)

Adding fake objects to real video

Approach

1. Recognize and/or track points that give you a coordinate frame
2. Apply homography (flat texture) or perspective projection (3D model) to put object into scene

Main challenge: dealing with lighting, shadows, occlusion



Information overlay

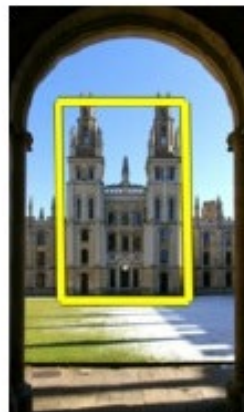
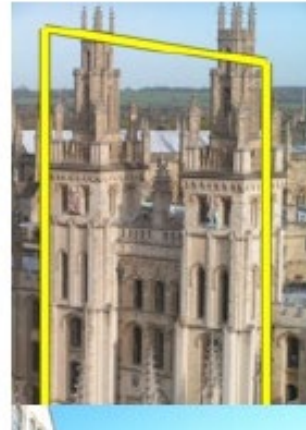
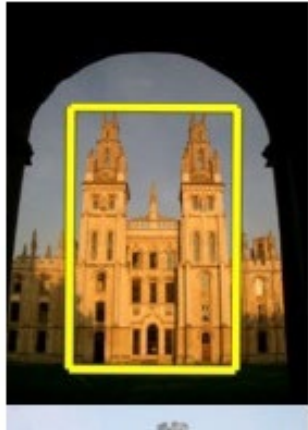
Approach

1. Recognize object that you've seen before
2. Possibly, compute its pose
3. Retrieve info and overlay

Main challenge: how to match reliably and efficiently?

Today

How to quickly find images in a large database that match a given image region?



Let's start with interest points

Query



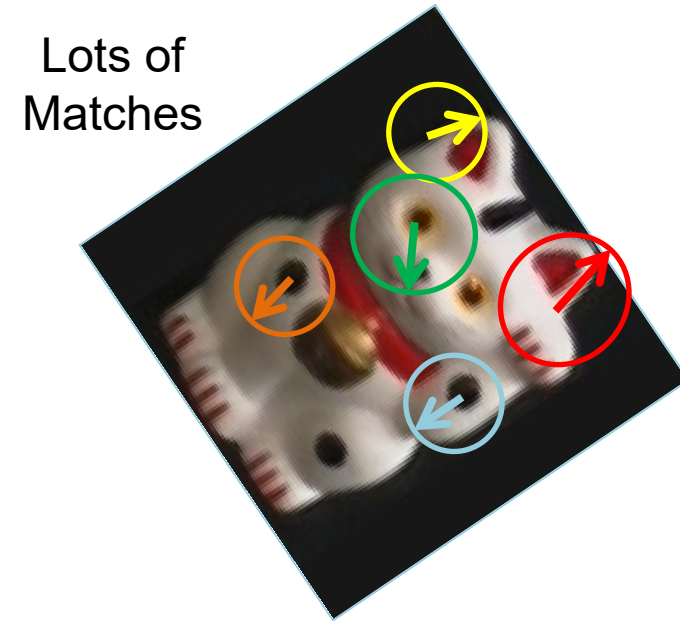
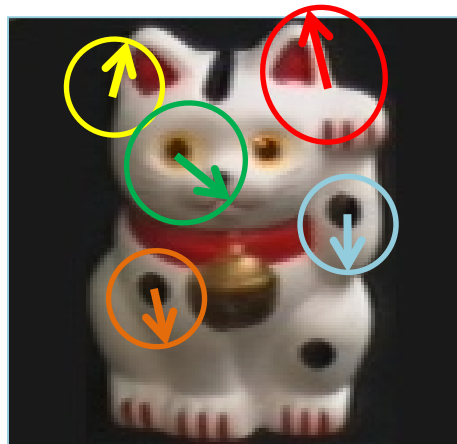
Database



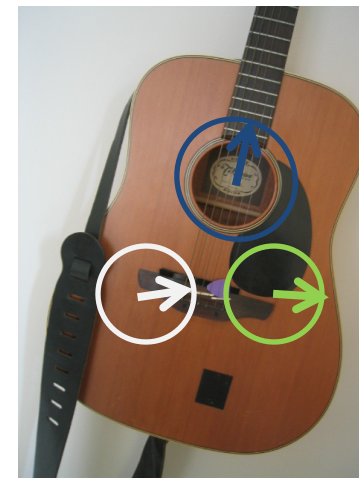
Compute interest points (or keypoints) for every image in the database and the query

Simple idea

See how many keypoints are close to keypoints in each other image



Few or No Matches



But this will be really, really slow!

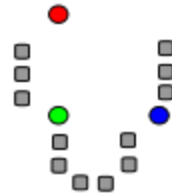
Key idea 1: “Visual Words”

- Cluster the keypoint descriptors

Key idea 1: “Visual Words”

K-means algorithm

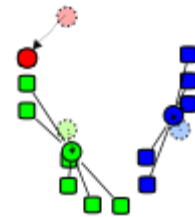
1. Randomly select K centers



2. Assign each point to nearest center



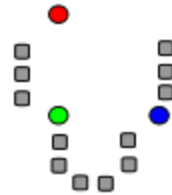
3. Compute new center (mean) for each cluster



Key idea 1: “Visual Words”

K-means algorithm

1. Randomly select K centers



2. Assign each point to nearest center



3. Compute new center (mean) for each cluster



Back to 2

Kmeans: Matlab code

```
function C = kmeans(X, K)

% Initialize cluster centers to be randomly sampled points
[N, d] = size(X);
rp = randperm(N);
C = X(rp(1:K), :);

lastAssignment = zeros(N, 1);
while true

    % Assign each point to nearest cluster center
    bestAssignment = zeros(N, 1);
    mindist = Inf*ones(N, 1);
    for k = 1:K
        for n = 1:N
            dist = sum((X(n, :)-C(k, :)).^2);
            if dist < mindist(n)
                mindist(n) = dist;
                bestAssignment(n) = k;
            end
        end
    end

    % break if assignment is unchanged
    if all(bestAssignment==lastAssignment), break; end;
    lastAssignment = bestAssignment;

    % Assign each cluster center to mean of points within it
    for k = 1:K
        C(k, :) = mean(X(bestAssignment==k, :));
    end
end
```

K-means Demo

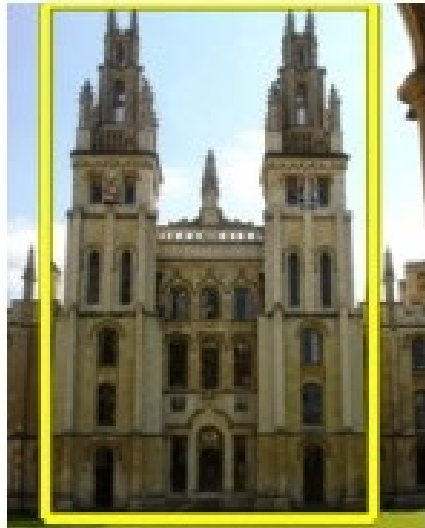
<https://www.naftaliharris.com/blog/visualizing-k-means-clustering/>

Key idea 1: “Visual Words”

- Cluster the keypoint descriptors
- Assign each descriptor to a cluster number
 - What does this buy us?
 - Each descriptor was 128 dimensional floating point, now is 1 integer (easy to match!)
 - Is there a catch?
 - Need **a lot** of clusters (e.g., 1 million) if we want points in the same cluster to be very similar
 - Points that really are similar might end up in different clusters

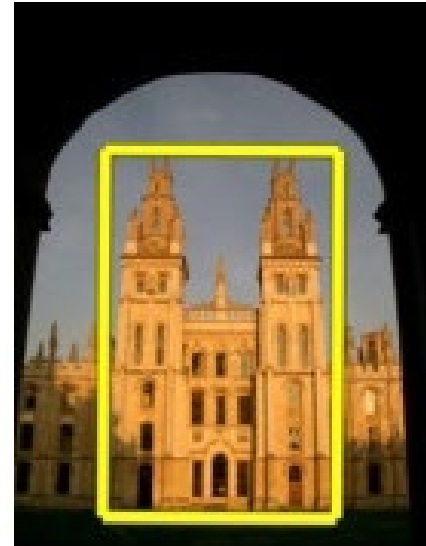
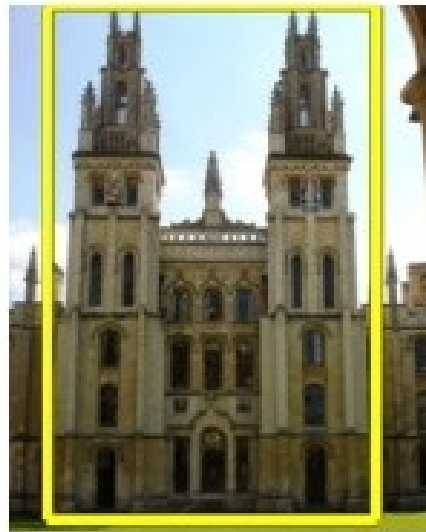
Key idea 1: “Visual Words”

- Cluster the keypoint descriptors
- Assign each descriptor to a cluster number
- Represent an image region with a count of these “visual words”



Key idea 1: “Visual Words”

- Cluster the keypoint descriptors
- Assign each descriptor to a cluster number
- Represent an image region with a count of these “visual words”
- An image is a good match if it has a lot of the same visual words as the query region



Naïve matching is still too slow

Imagine matching 1,000,000 images, each with 1,000 keypoints

Key Idea 2: Inverse document file

- Like a book index: keep a list of all the words (keypoints) and all the pages (images) that contain them.
- Rank database images based on tf-idf measure.

tf-idf: Term Frequency – Inverse Document Frequency

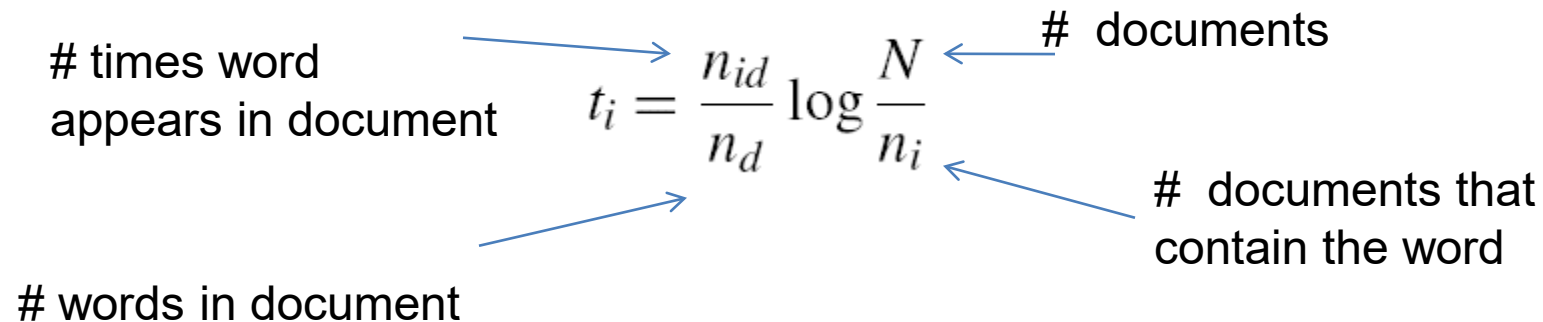
$$t_i = \frac{n_{id}}{n_d} \log \frac{N}{n_i}$$

times word appears in document

words in document

documents

documents that contain the word

The diagram shows the tf-idf formula $t_i = \frac{n_{id}}{n_d} \log \frac{N}{n_i}$. Four blue arrows point from descriptive text to the variables in the formula: one from '# times word appears in document' to n_{id} , one from '# words in document' to n_d , one from '# documents' to N , and one from '# documents that contain the word' to n_i .

Fast visual search

“Video Google”, Sivic and Zisserman, ICCV 2003

“Scalable Recognition with a Vocabulary Tree”, Nister and Stewenius, CVPR 2006.

110,000,000 Images in 5.8 Seconds



Slide Credit: Nister



Slide Credit: Nister



Slide Credit: Nister

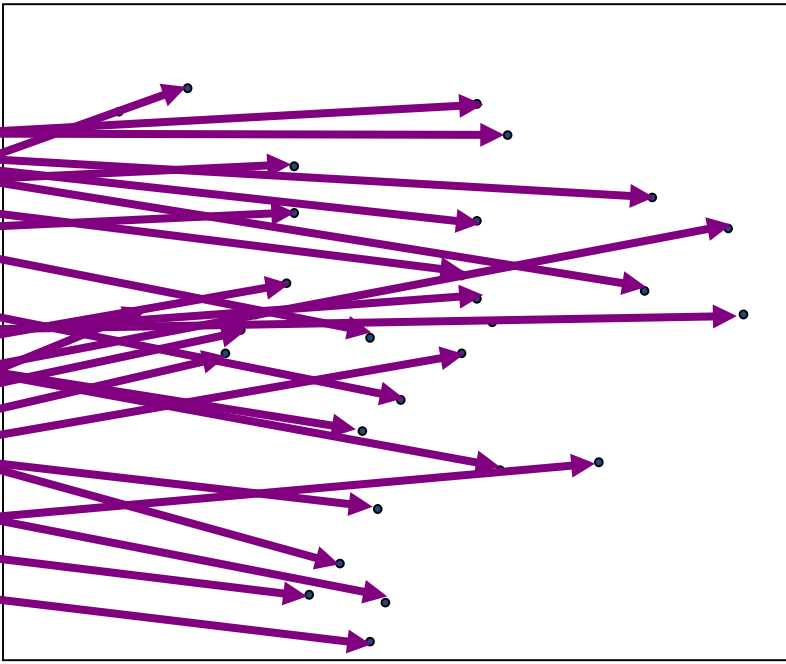
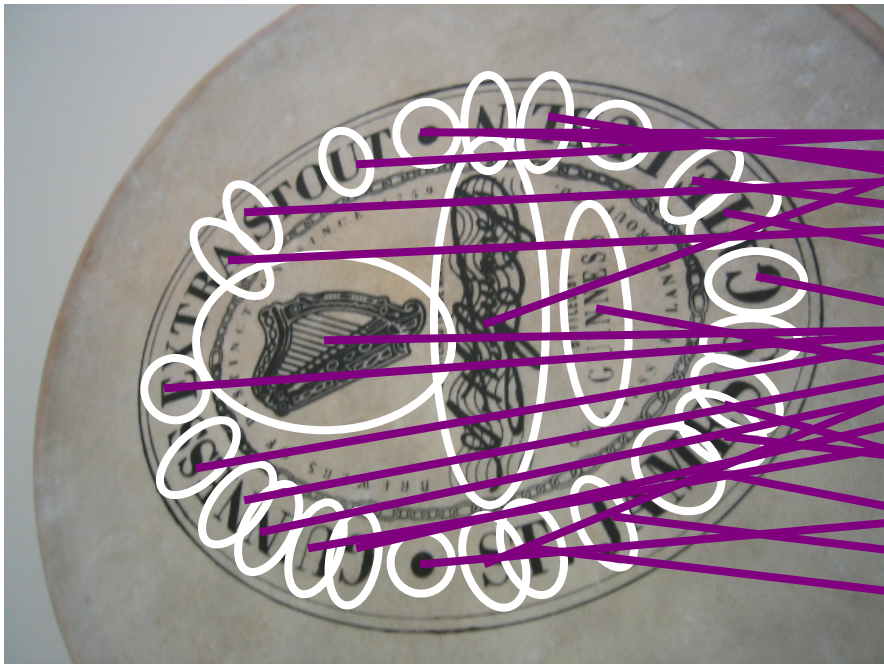


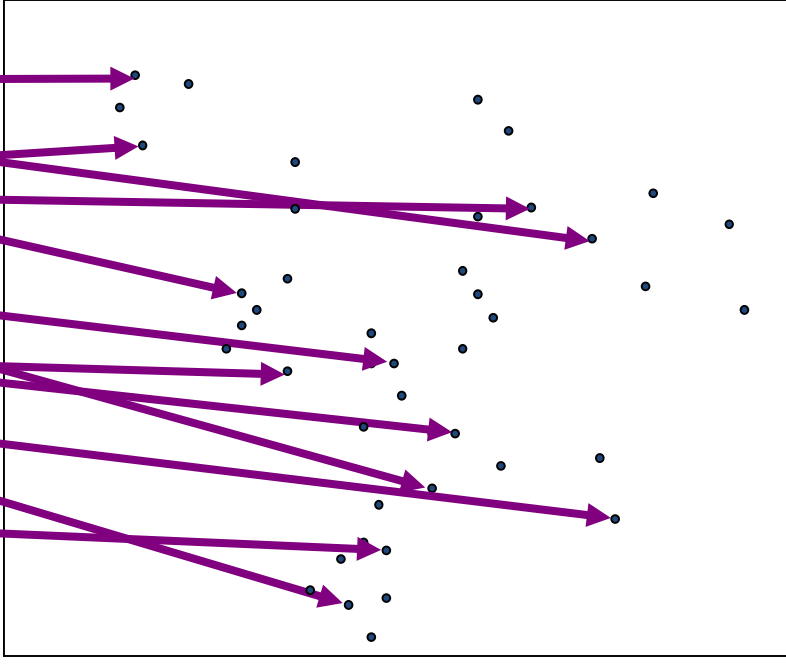
(C) L.W. Wildervanck

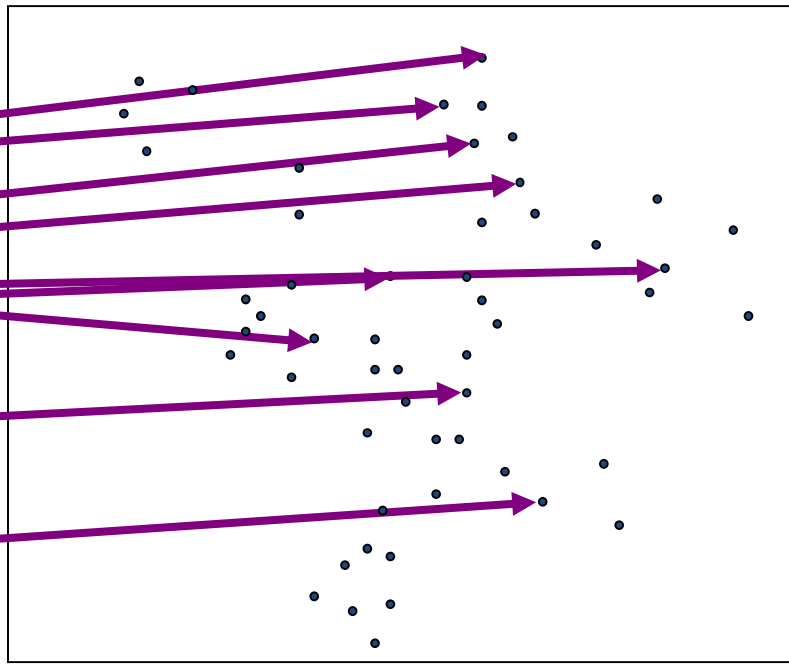
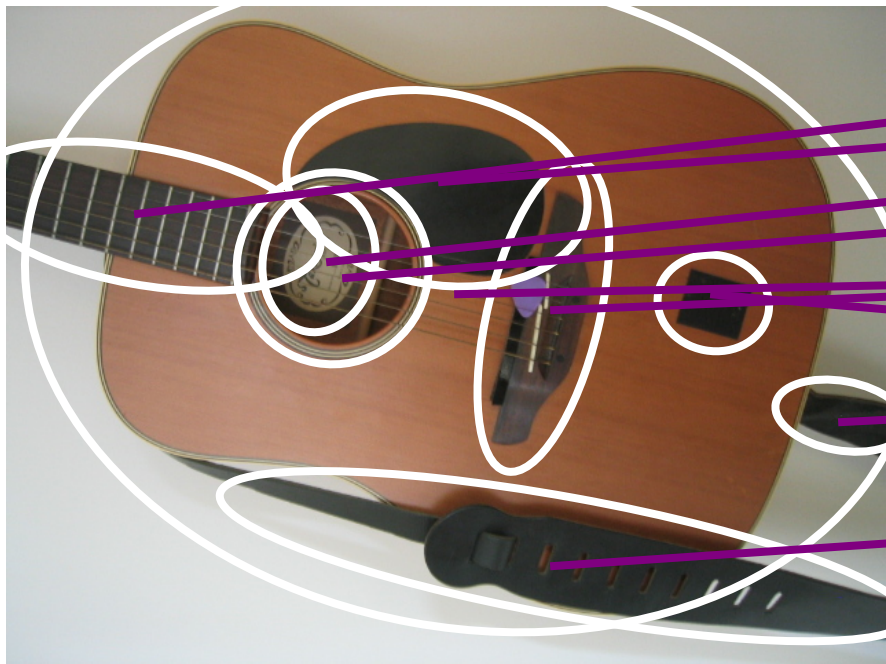
Slide Credit: Nister

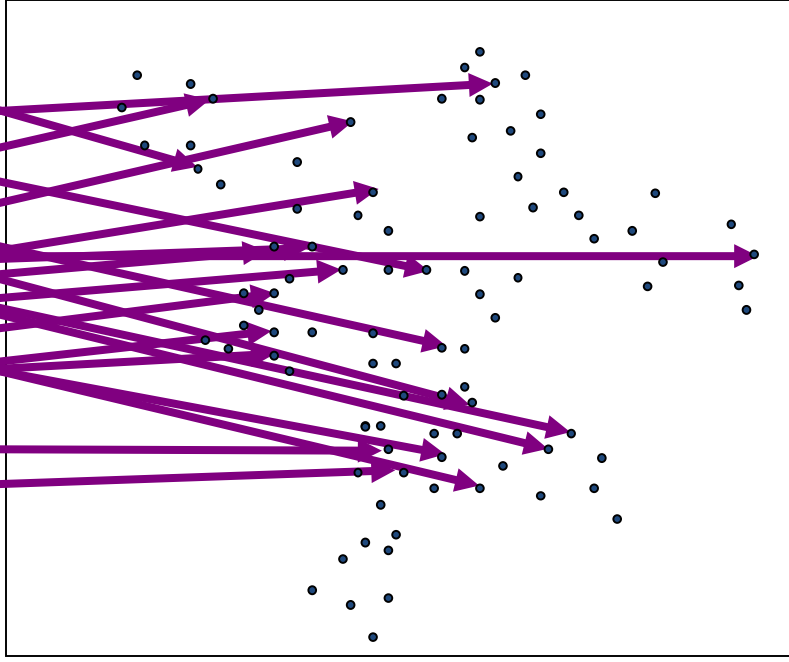
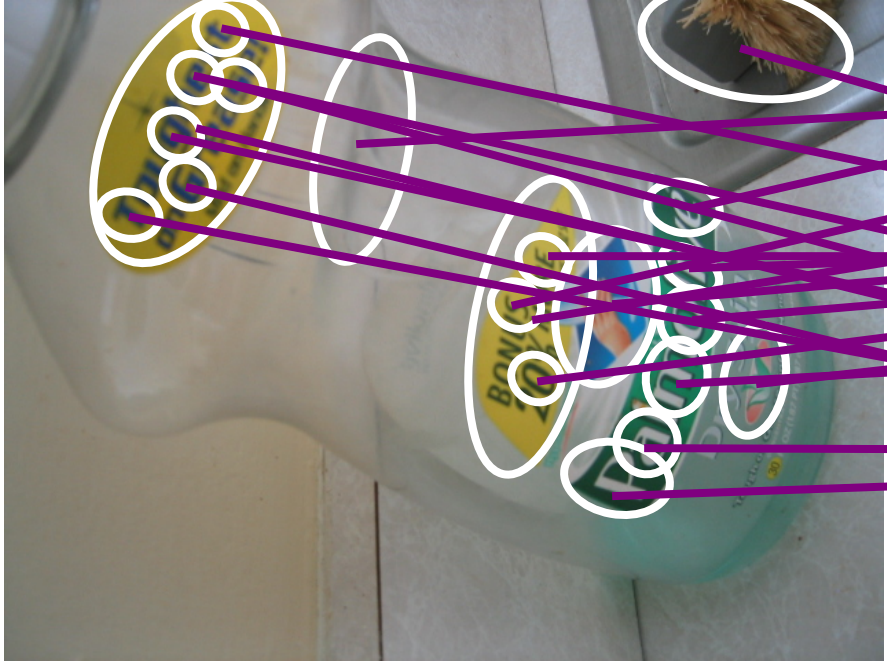
Recognition with K-tree

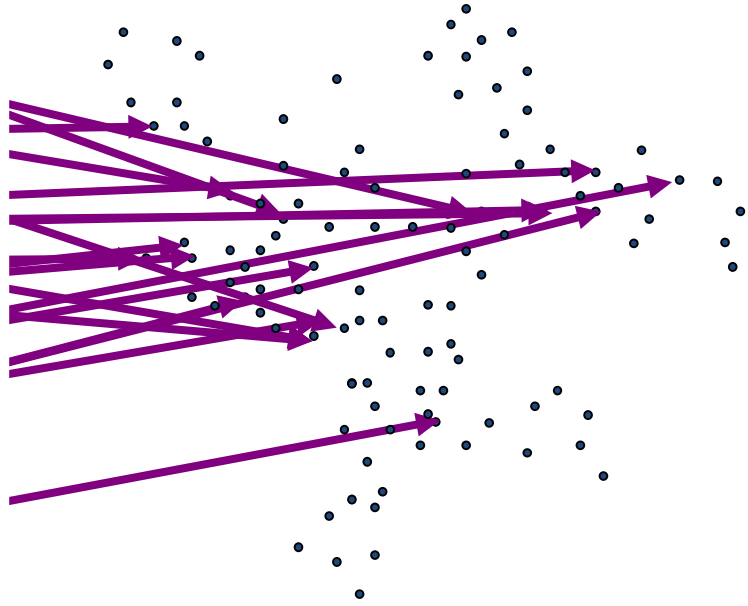
Following slides by David Nister (CVPR 2006)

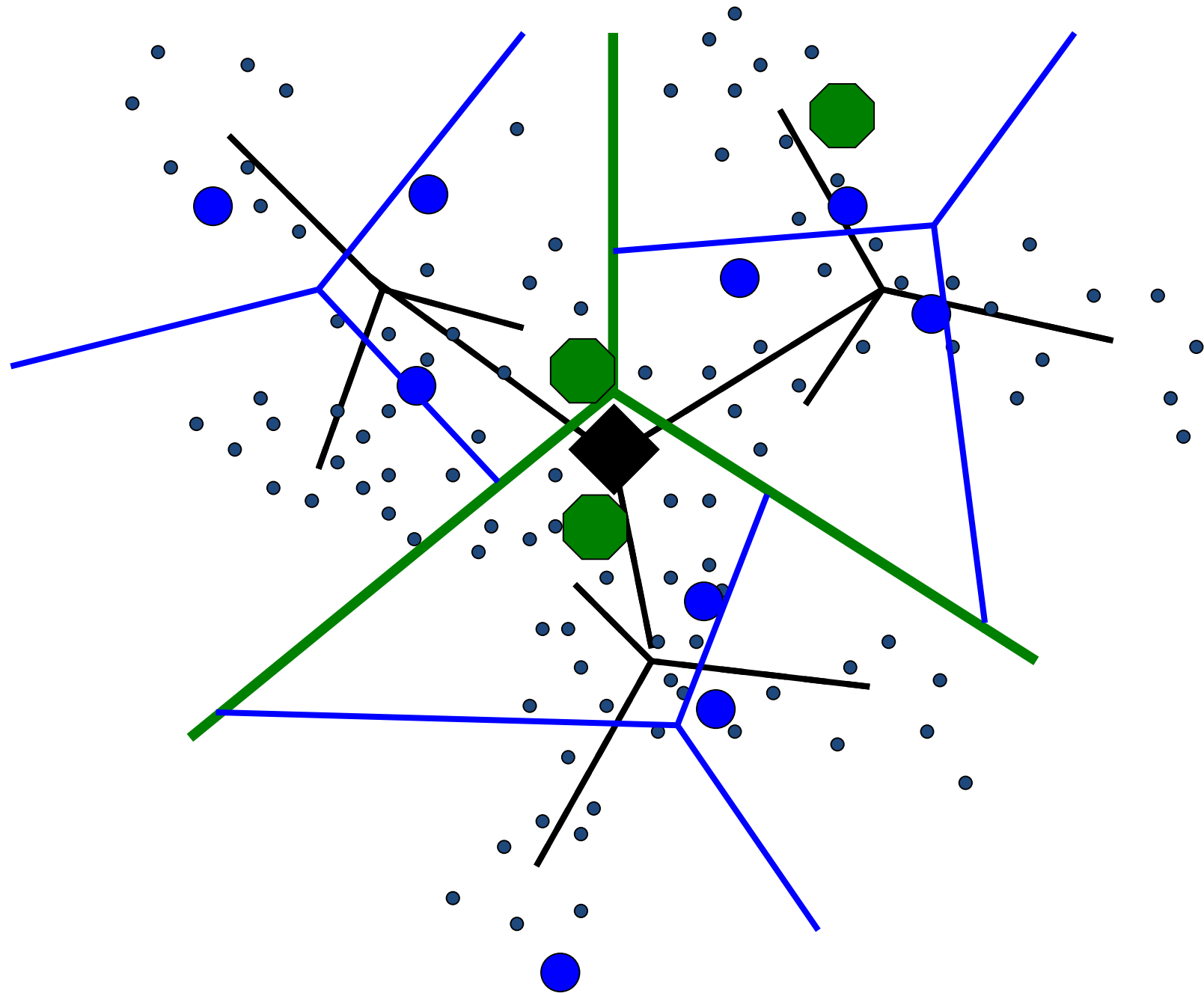


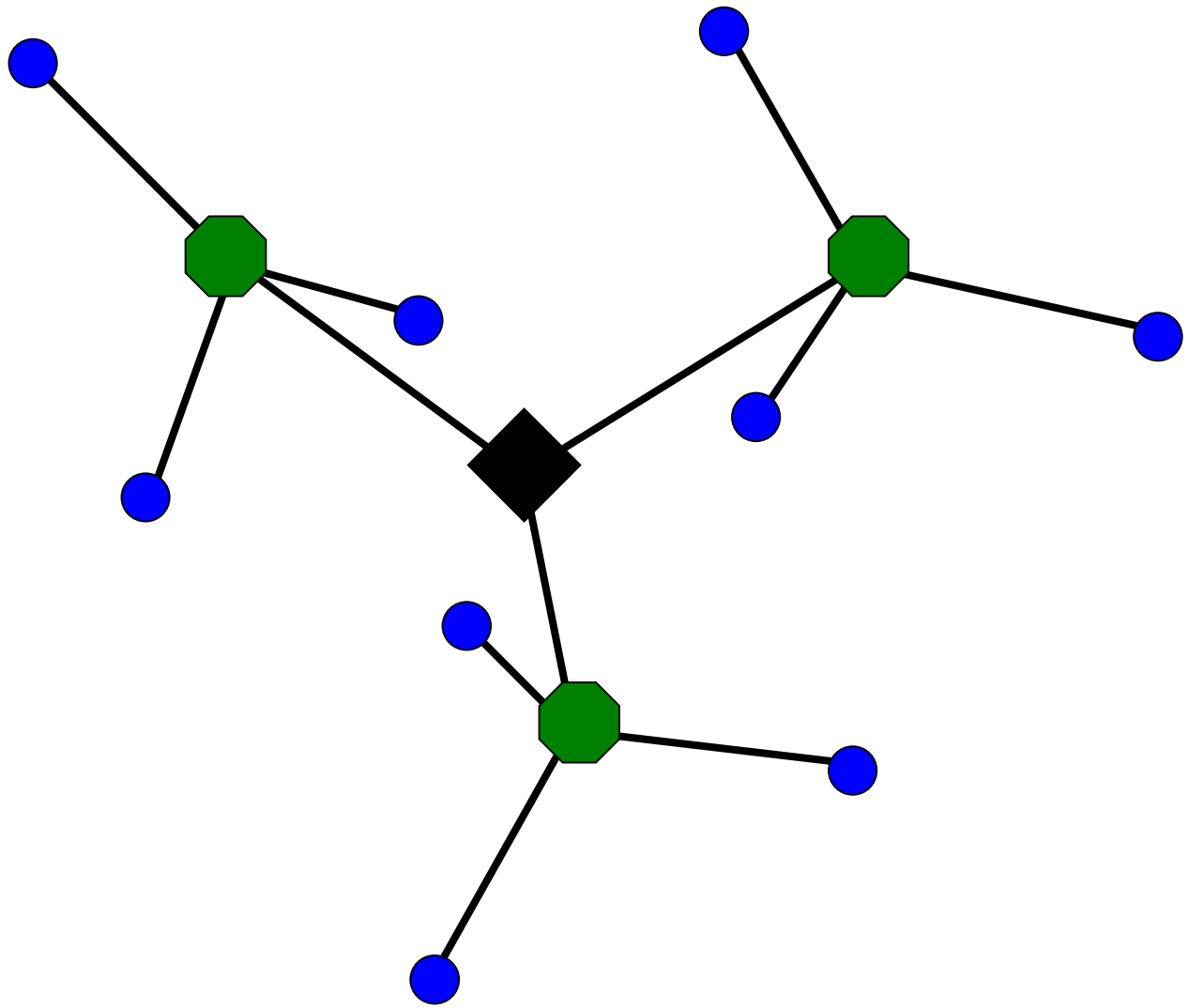


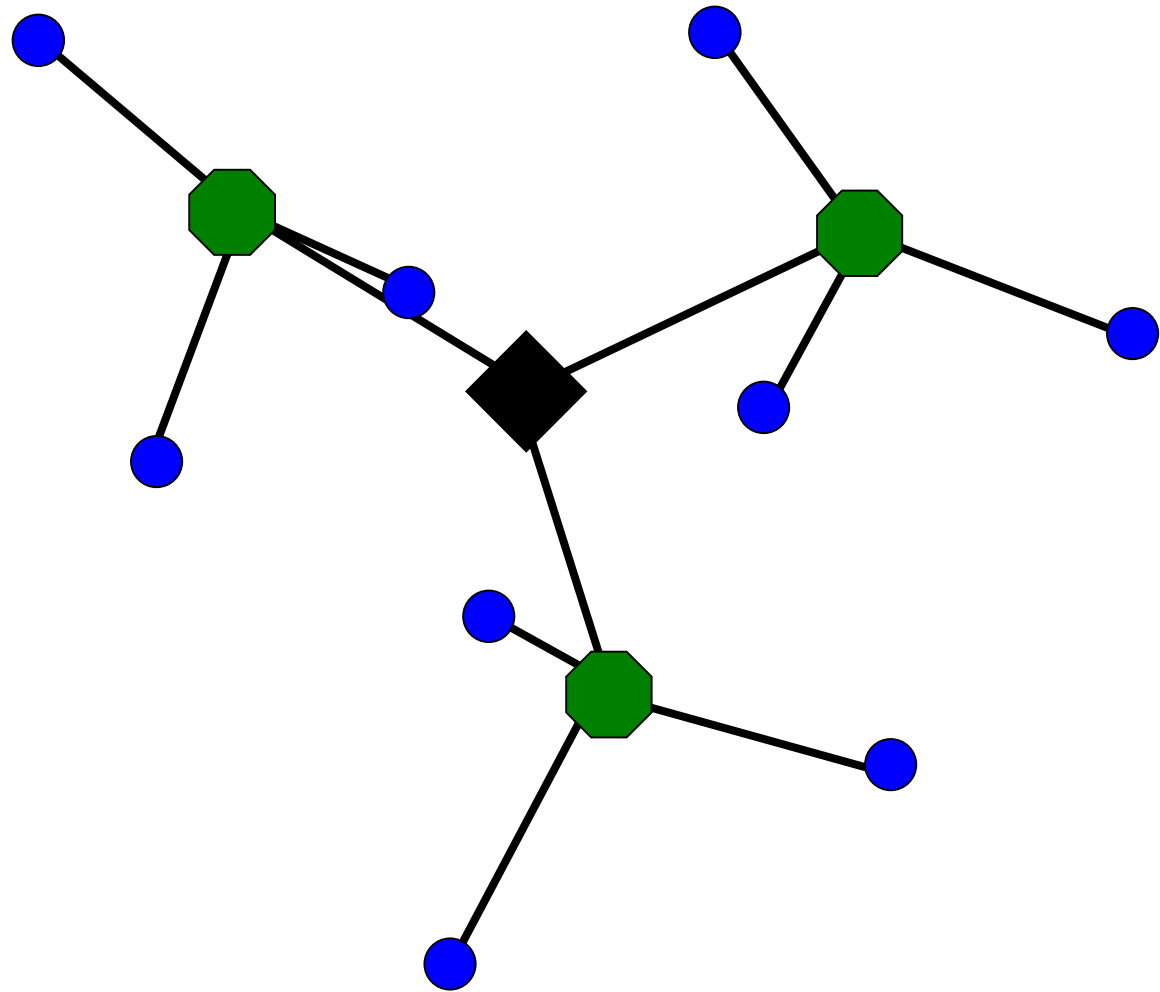


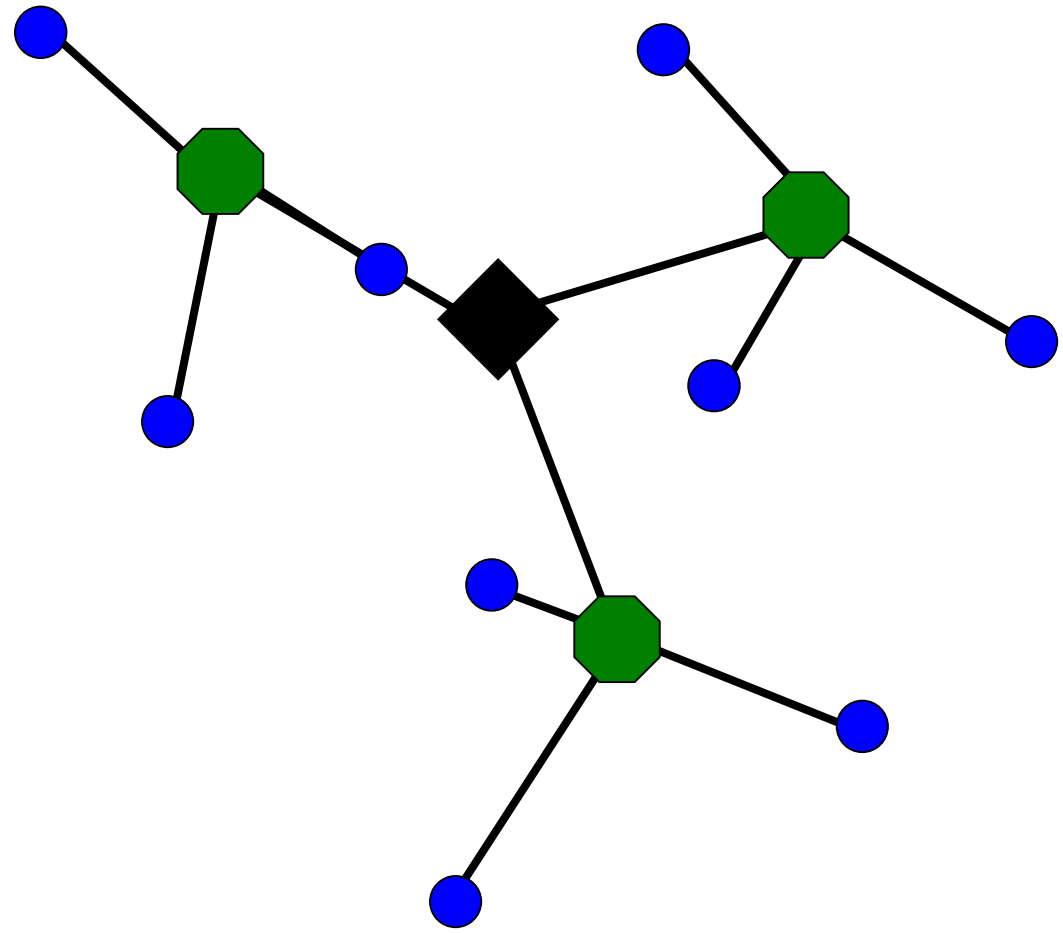


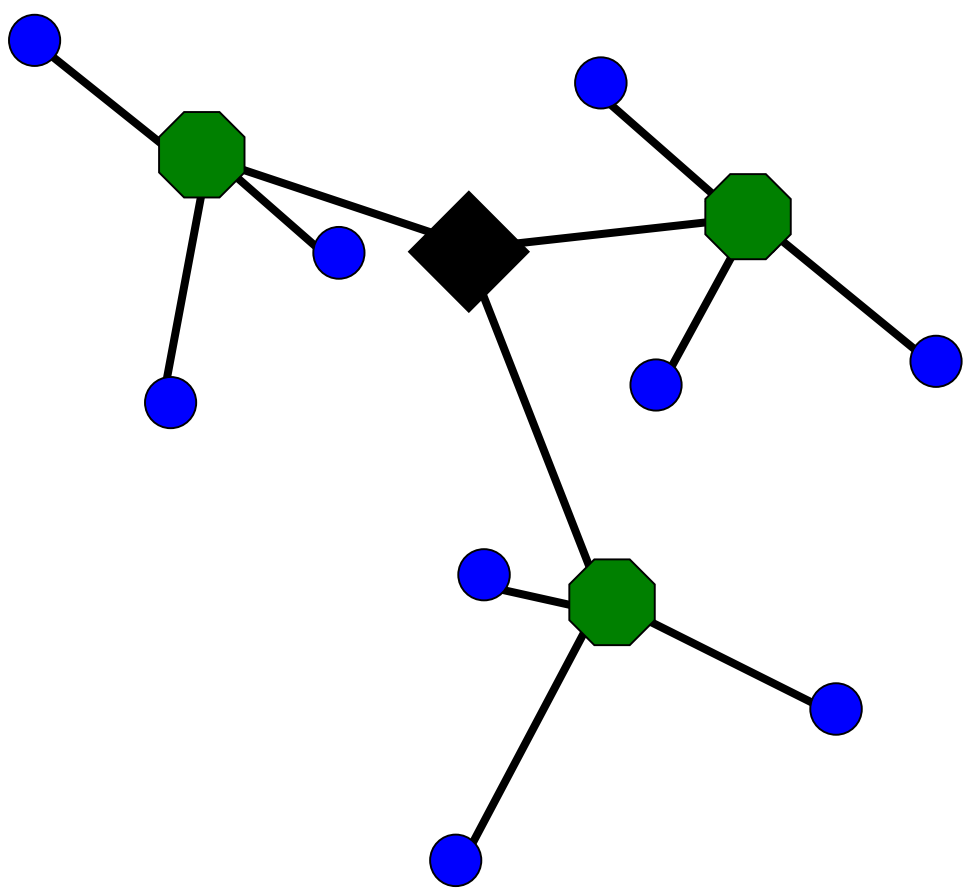


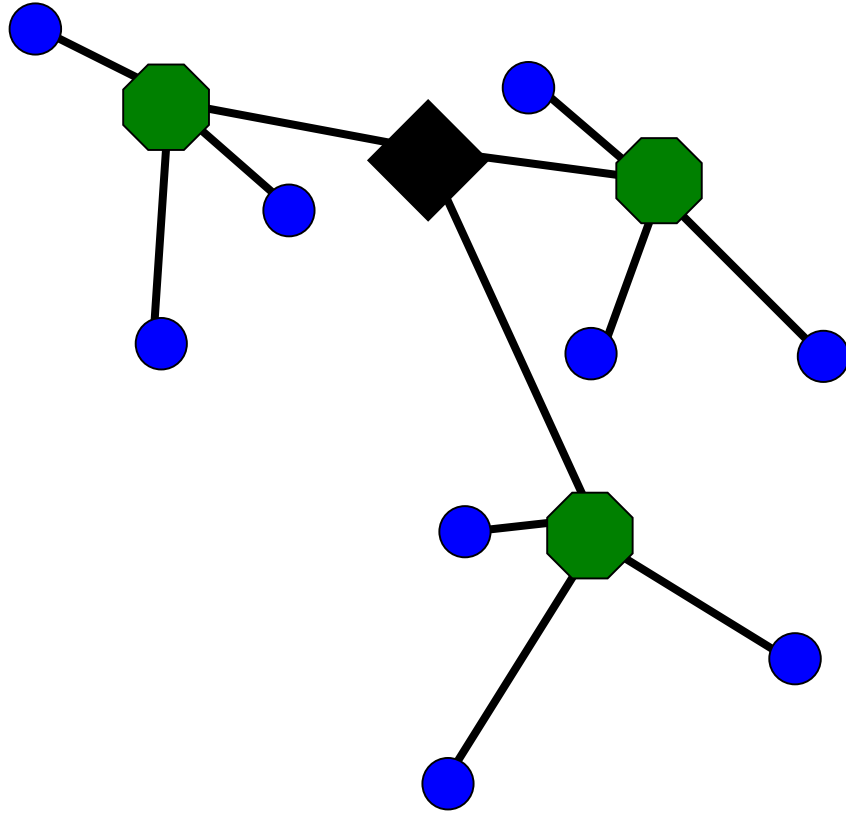


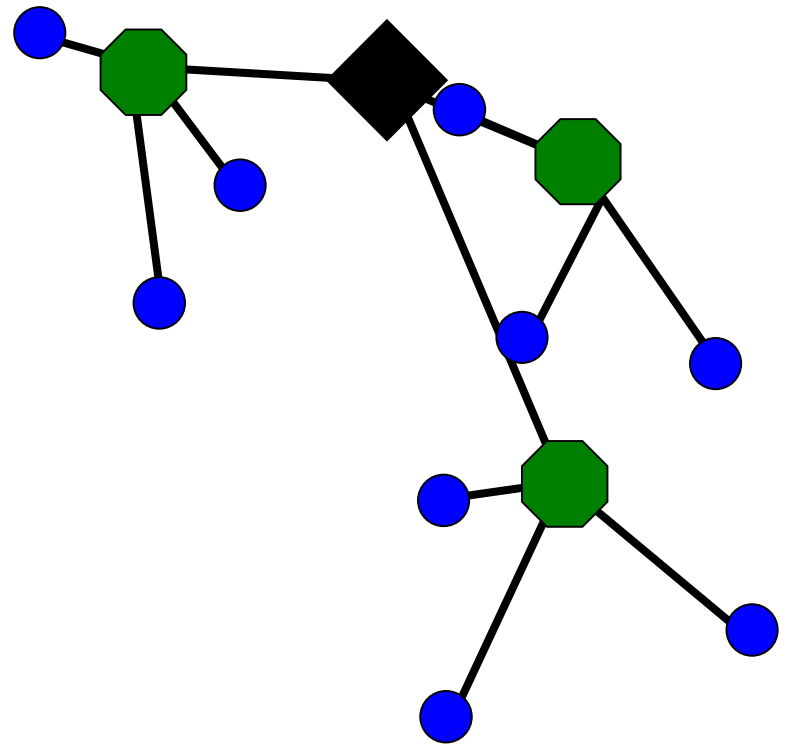


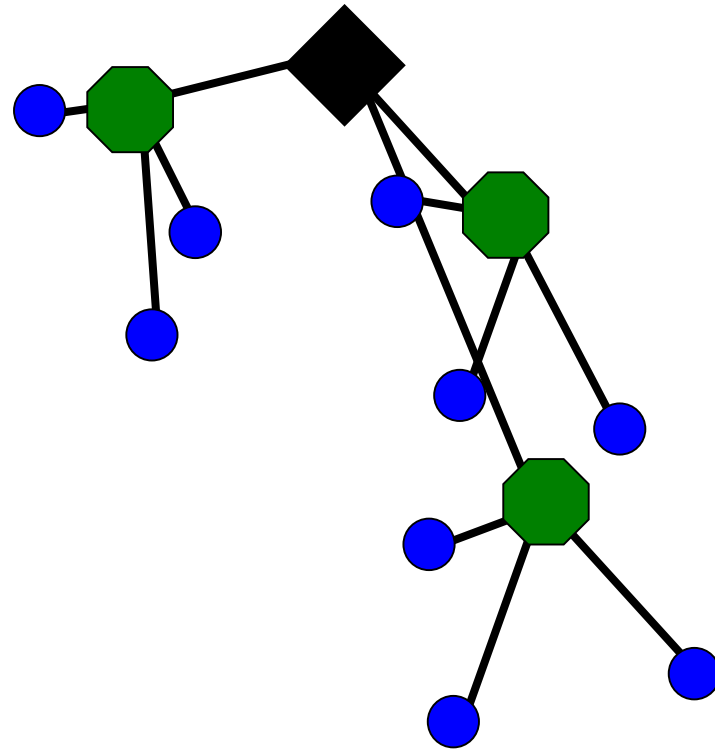


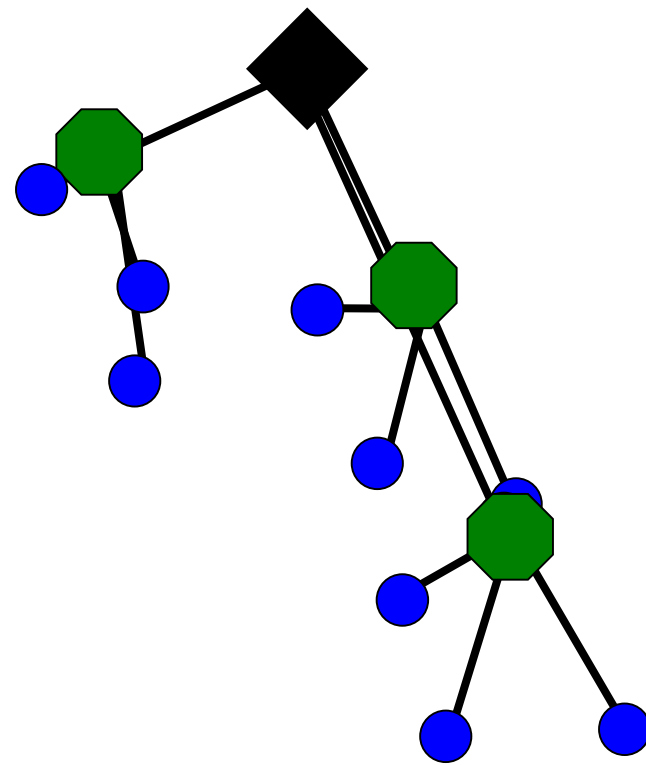


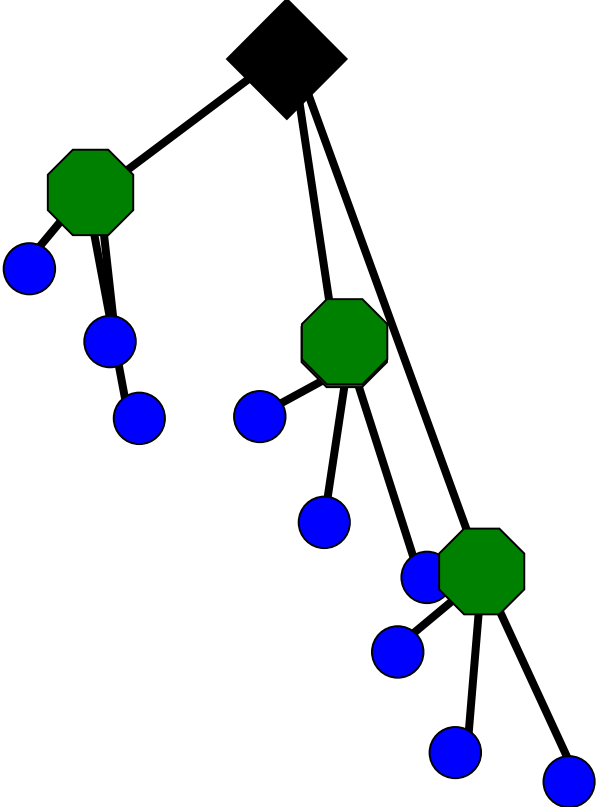


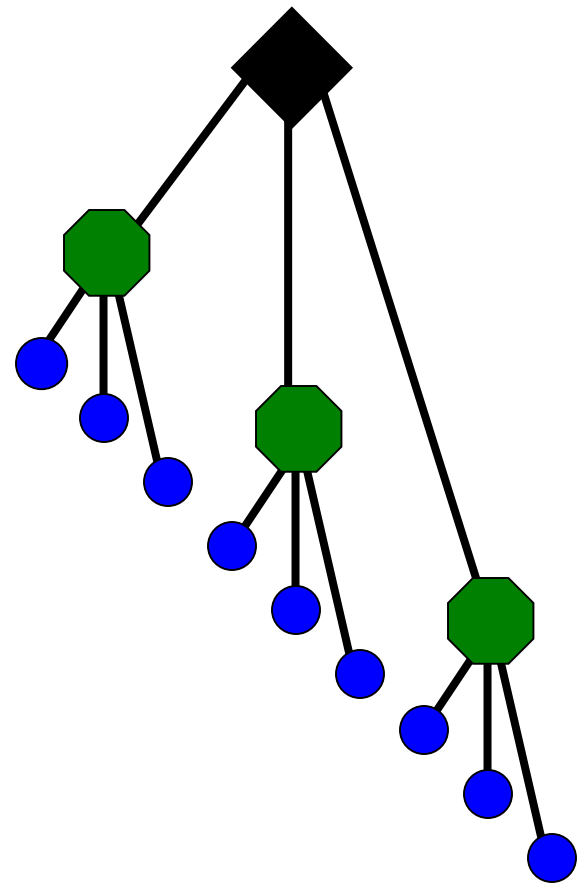


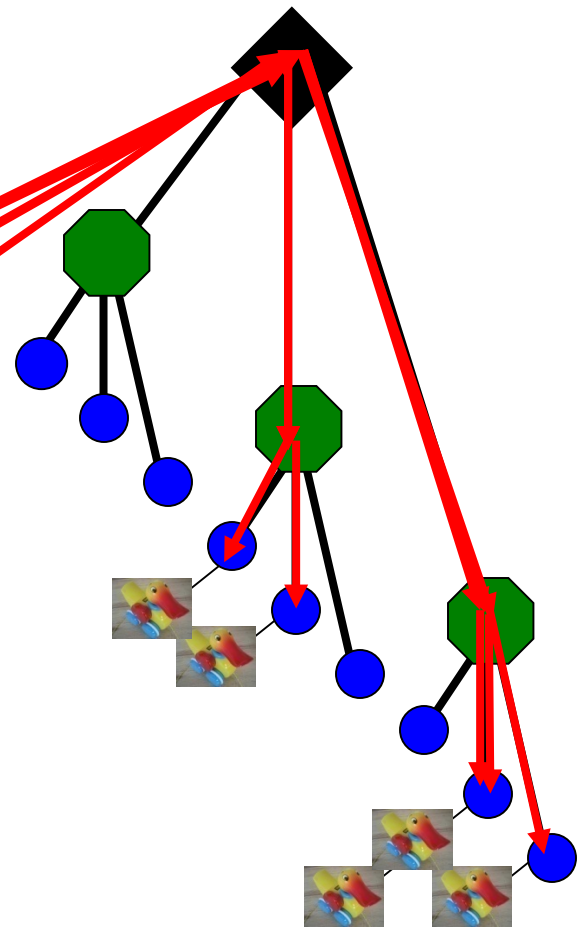
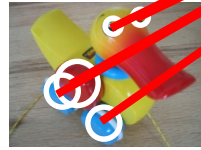


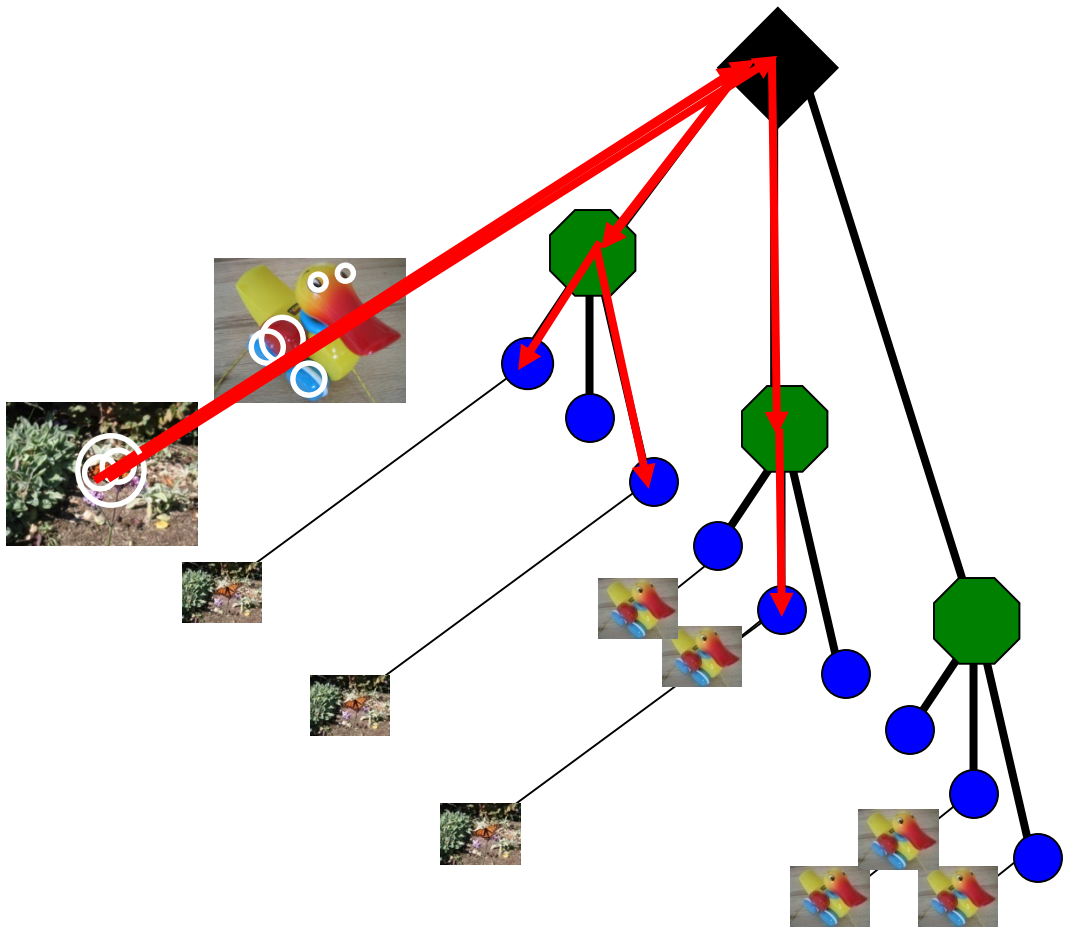


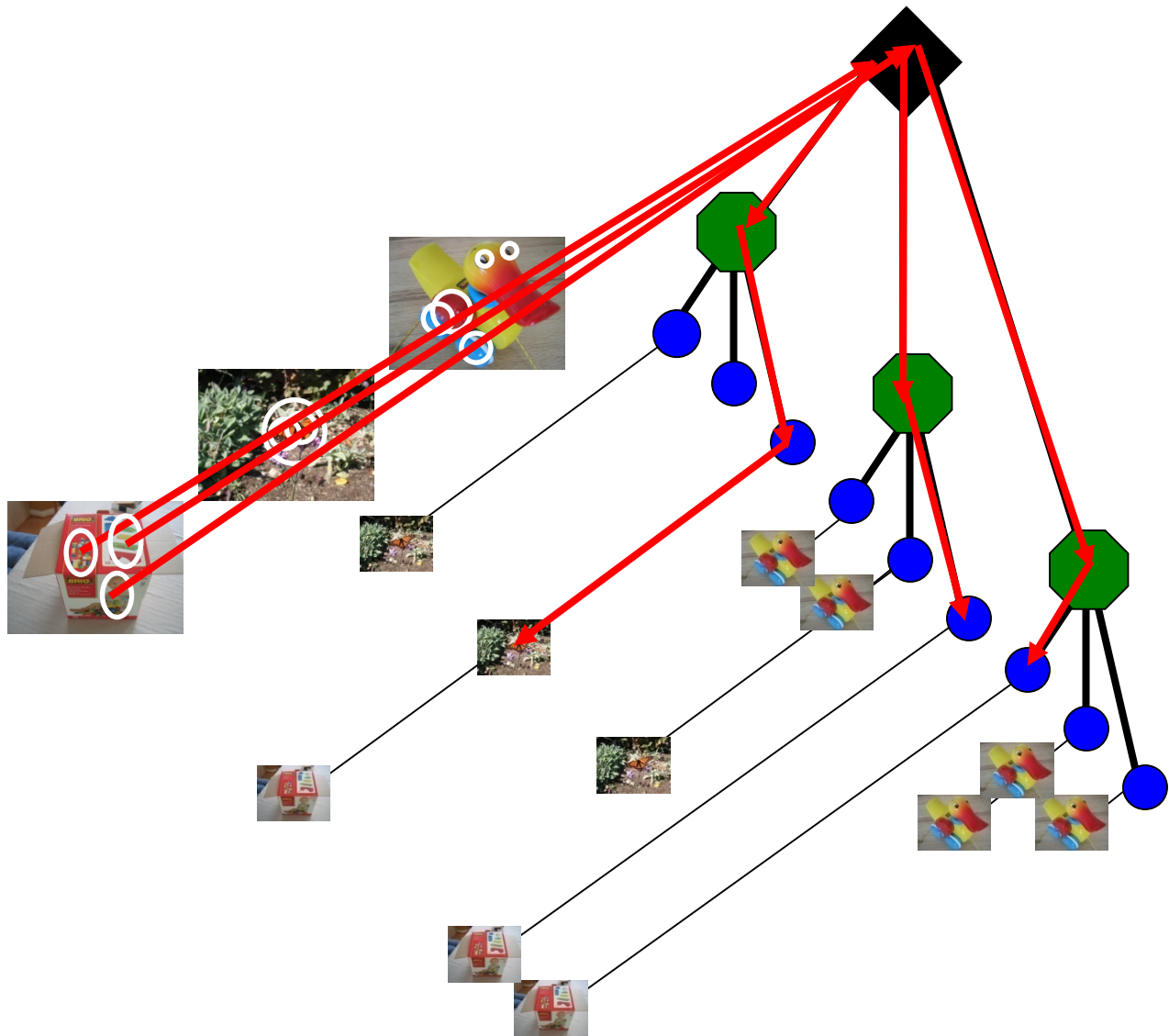


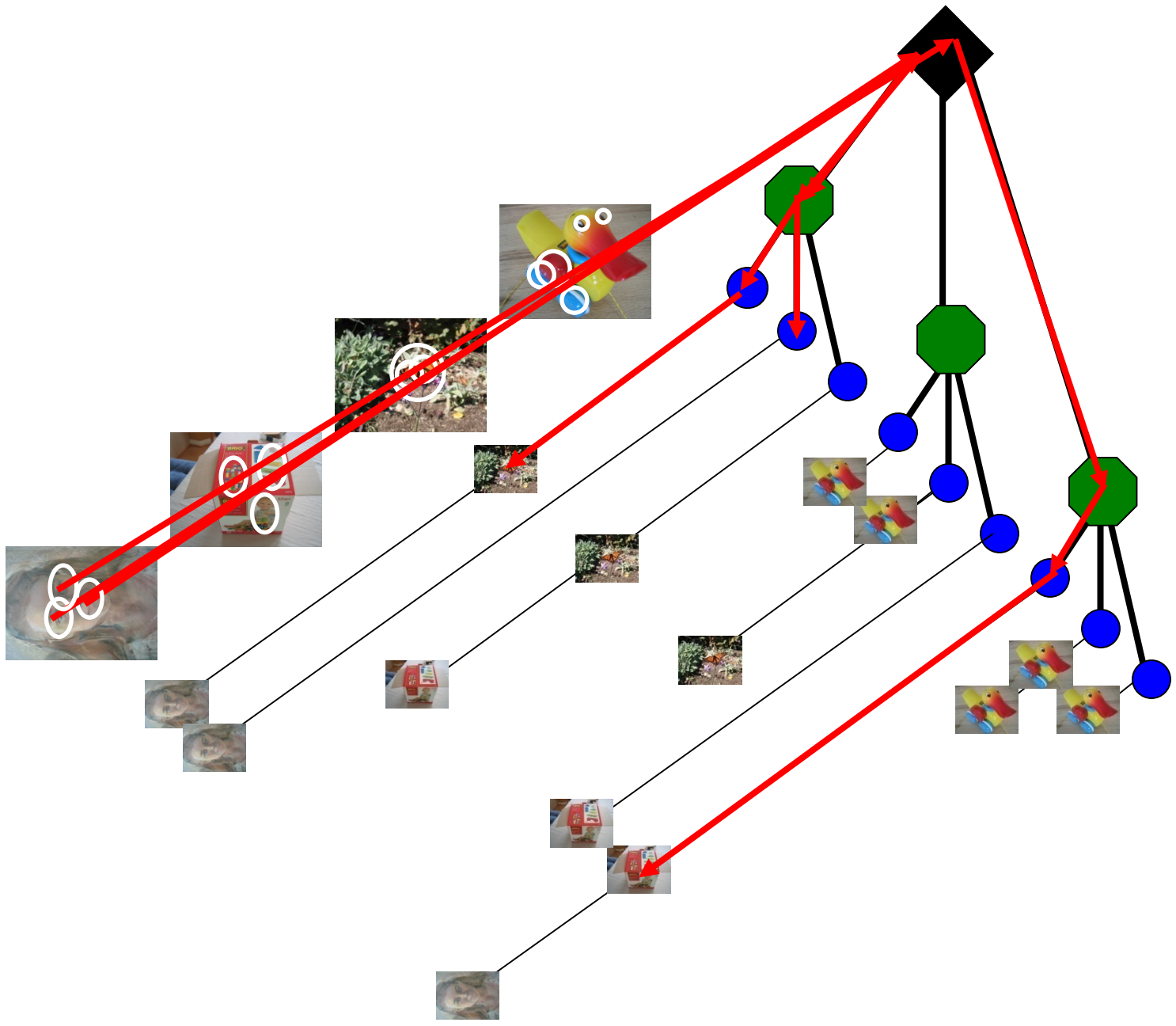


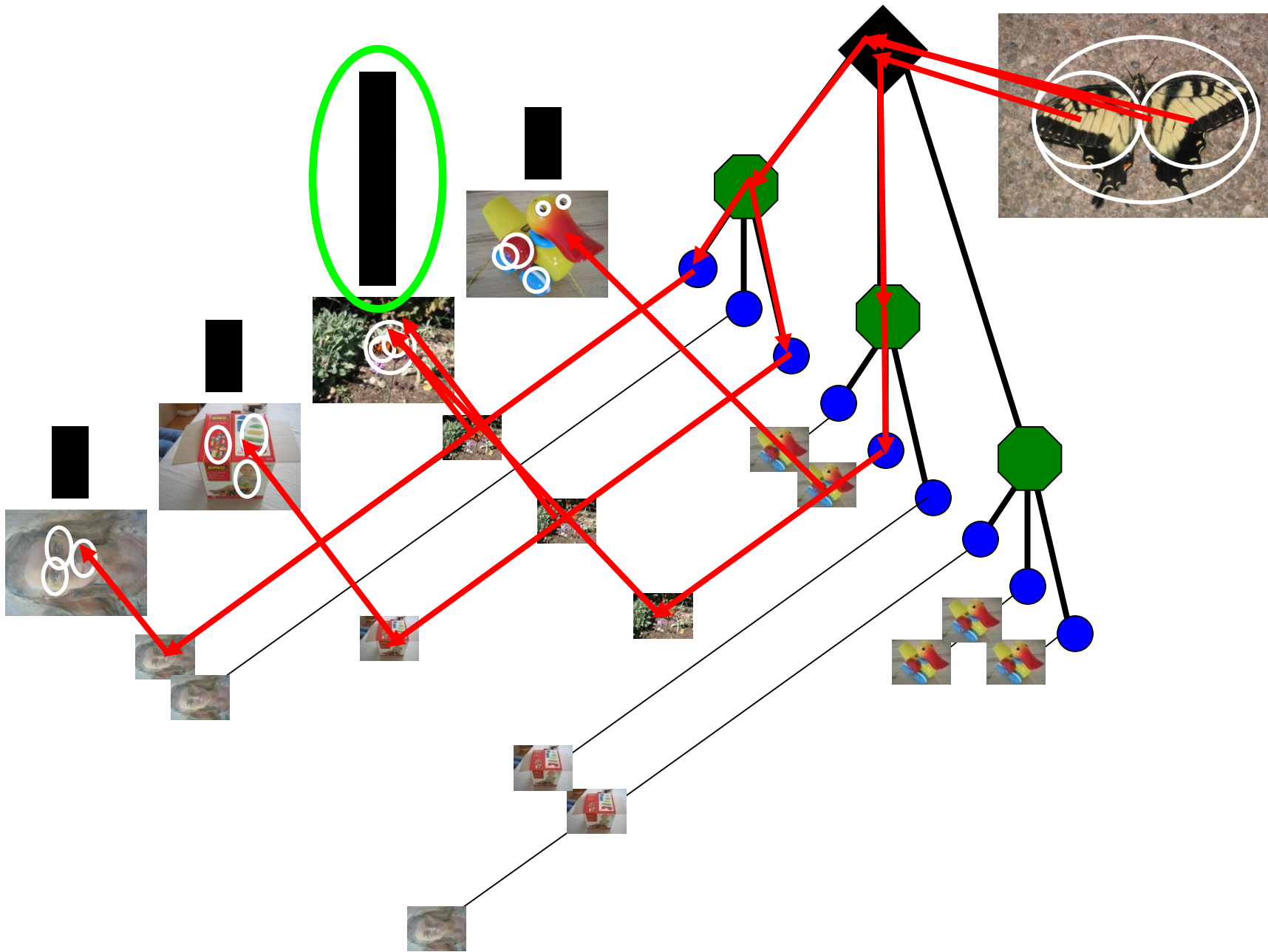




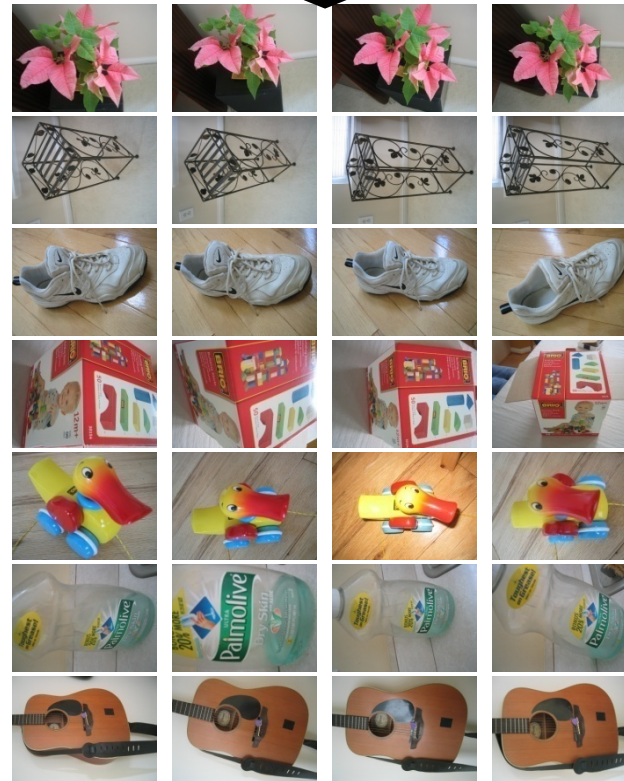
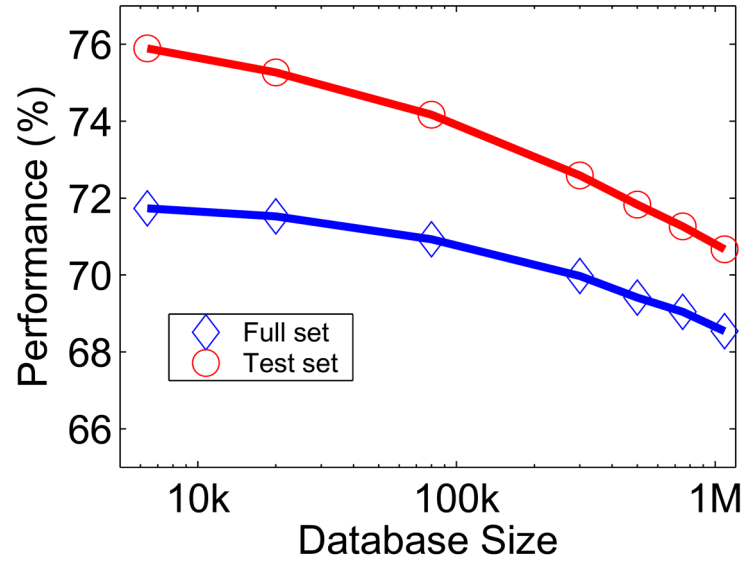








Performance



ImageSearch at the VizCentre

New query:

File is 500x320

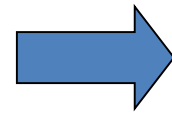


Top n results of your query.

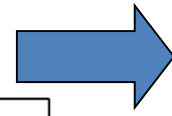


bourne/im1000043322.pgm bourne/im1000043323.pgm bourne/im1000043326.pgm bourne/im1000043327.pgm

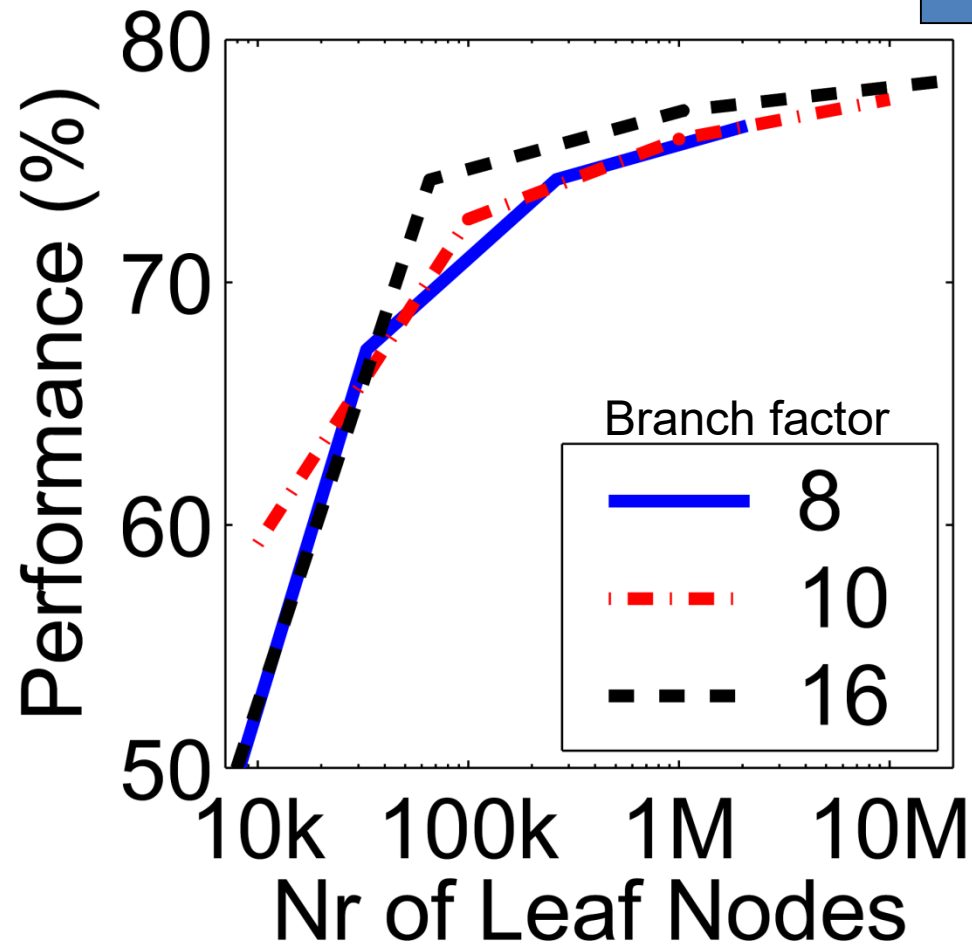
More words is better



Improves
Retrieval

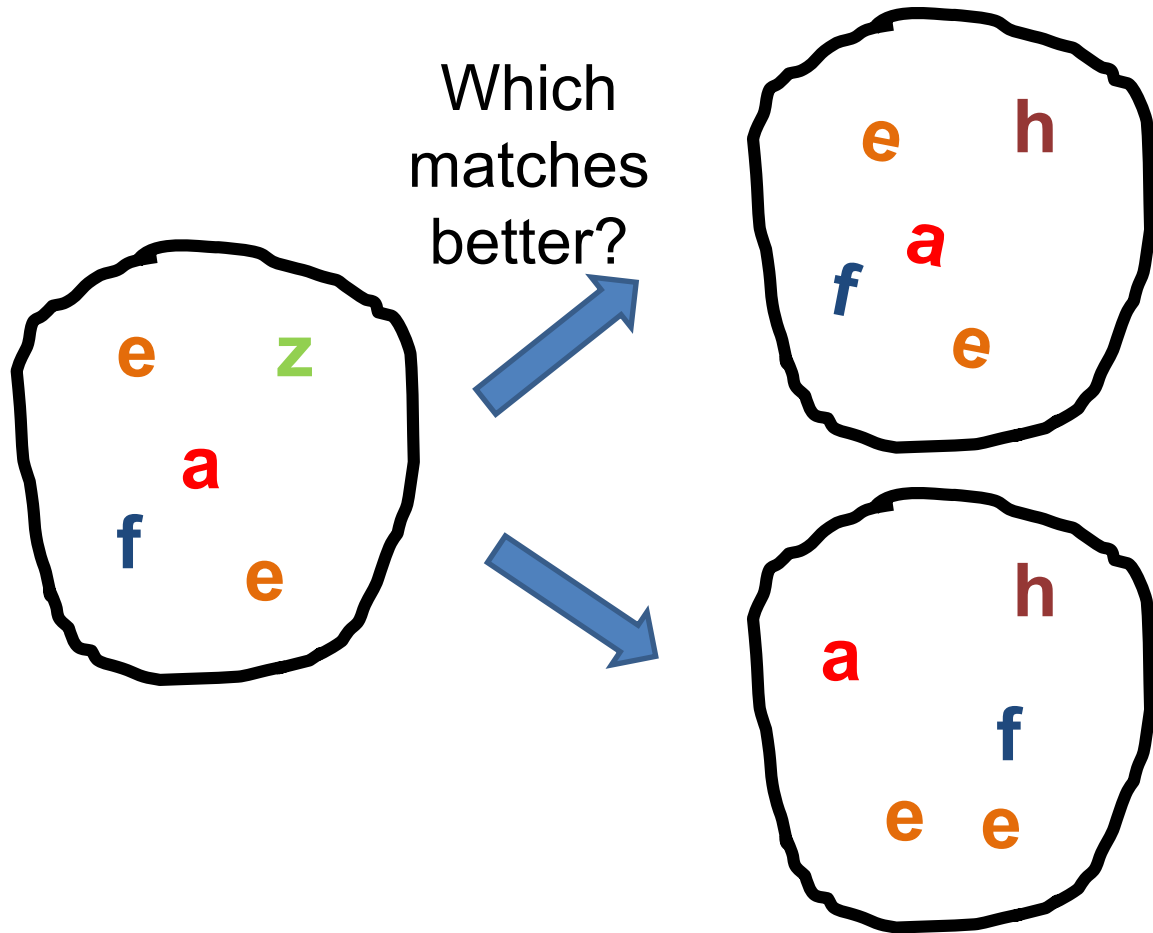


Improves
Speed



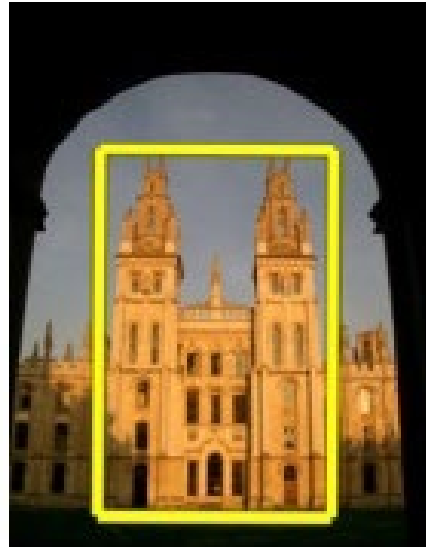
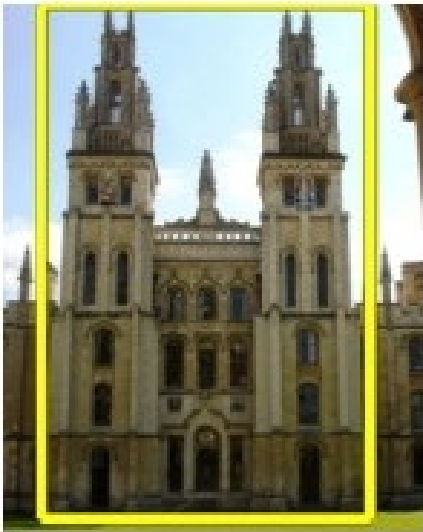
Can we be more accurate?

So far, we treat each image as containing a “bag of words”,
with no spatial information



Can we be more accurate?

So far, we treat each image as containing a “bag of words”,
with no spatial information



Real objects have consistent geometry

Final key idea: geometric verification

- Goal: Given a set of possible keypoint matches, figure out which ones are geometrically consistent

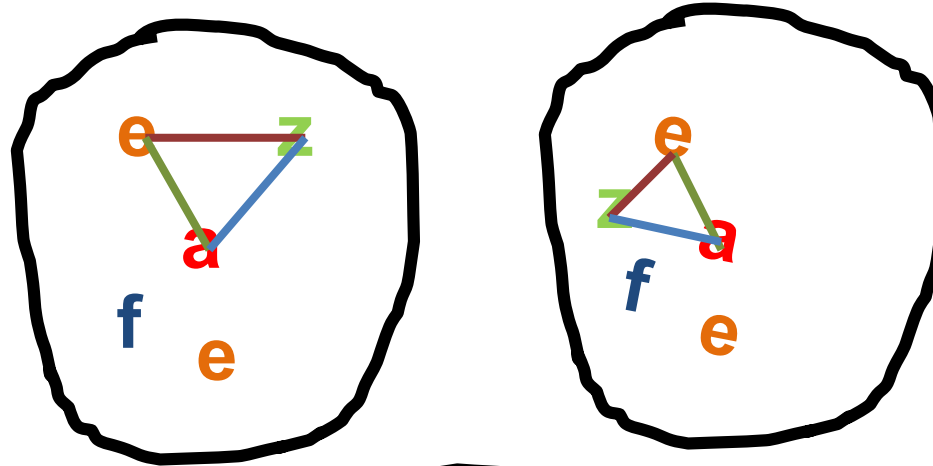
How can we do this?

Final key idea: geometric verification

RANSAC for affine transform

Repeat N times:

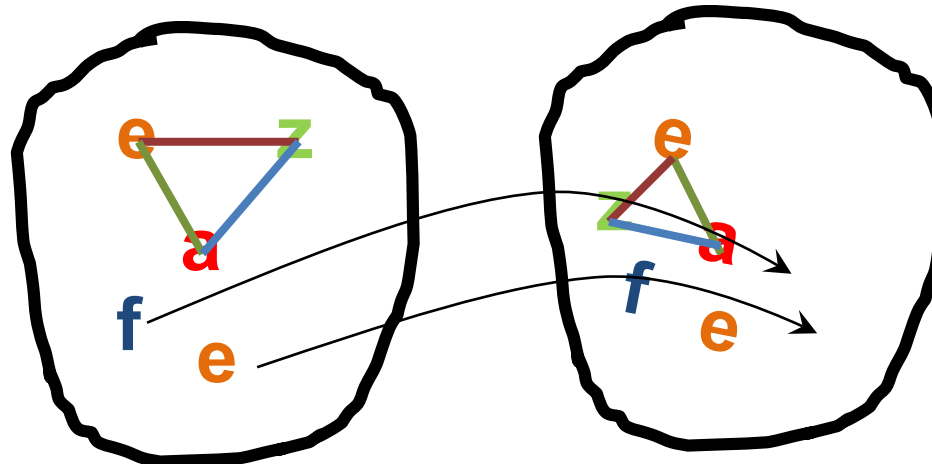
Randomly choose 3
matching pairs



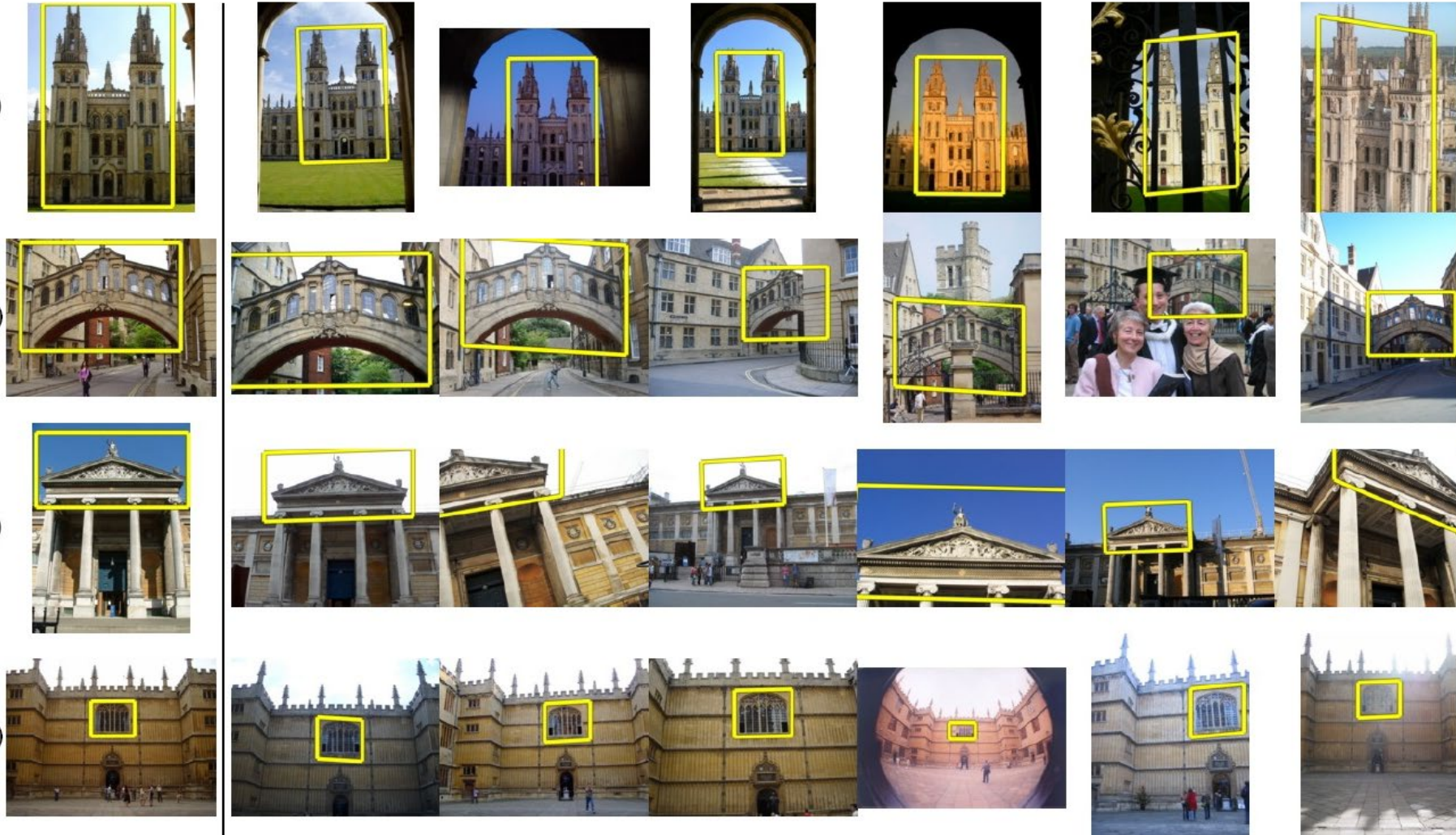
Estimate
transformation



Predict remaining
points and count
"inliers"



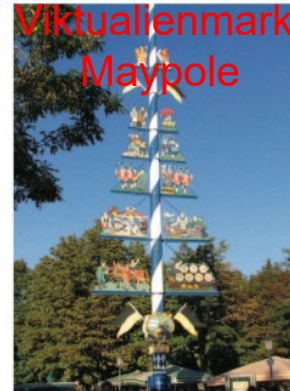
Application: Large-Scale Retrieval



Query

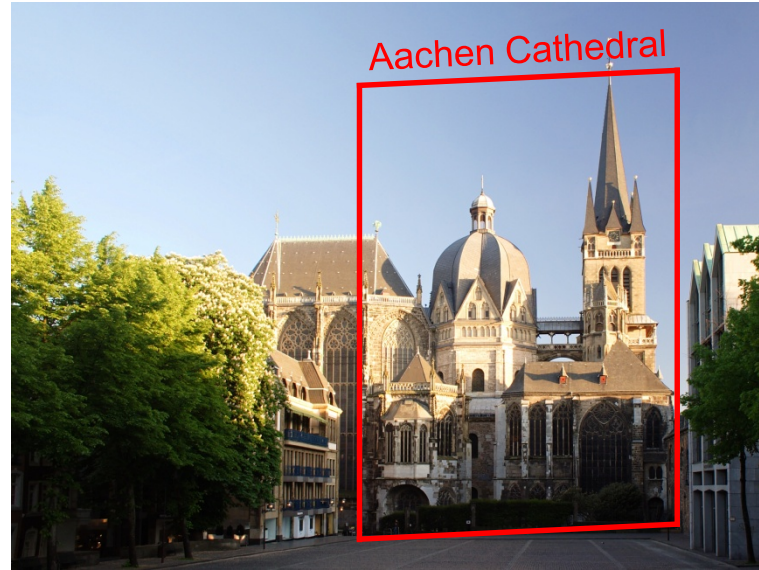
Results on 5K (demo available for 100K)

Application: Image Auto-Annotation



Left: Wikipedia image
Right: closest match from Flickr

Example Applications



Mobile tourist guide

Self-localization

Object/building recognition

Photo/video augmentation

Video Google System

1. Collect all words within query region
2. Inverted file index to find relevant frames
3. Compare word counts
4. Spatial verification

Sivic & Zisserman, ICCV 2003

- Demo online at :
<http://www.robots.ox.ac.uk/~vgg/research/vgoogle/index.html>



Query region



Retrieved frames

Summary: Uses of Interest Points

- Interest points can be detected reliably in different images at the same 3D location
 - DOG interest points are localized in x , y , scale
- SIFT is robust to rotation and small deformation
- Interest points provide correspondence
 - For image stitching
 - For defining coordinate frames for object insertion
 - For object recognition and retrieval

Next class

- Opportunities of scale: stuff you can do with millions of images
 - Texture synthesis of large regions
 - Recover GPS coordinates
 - Etc.