



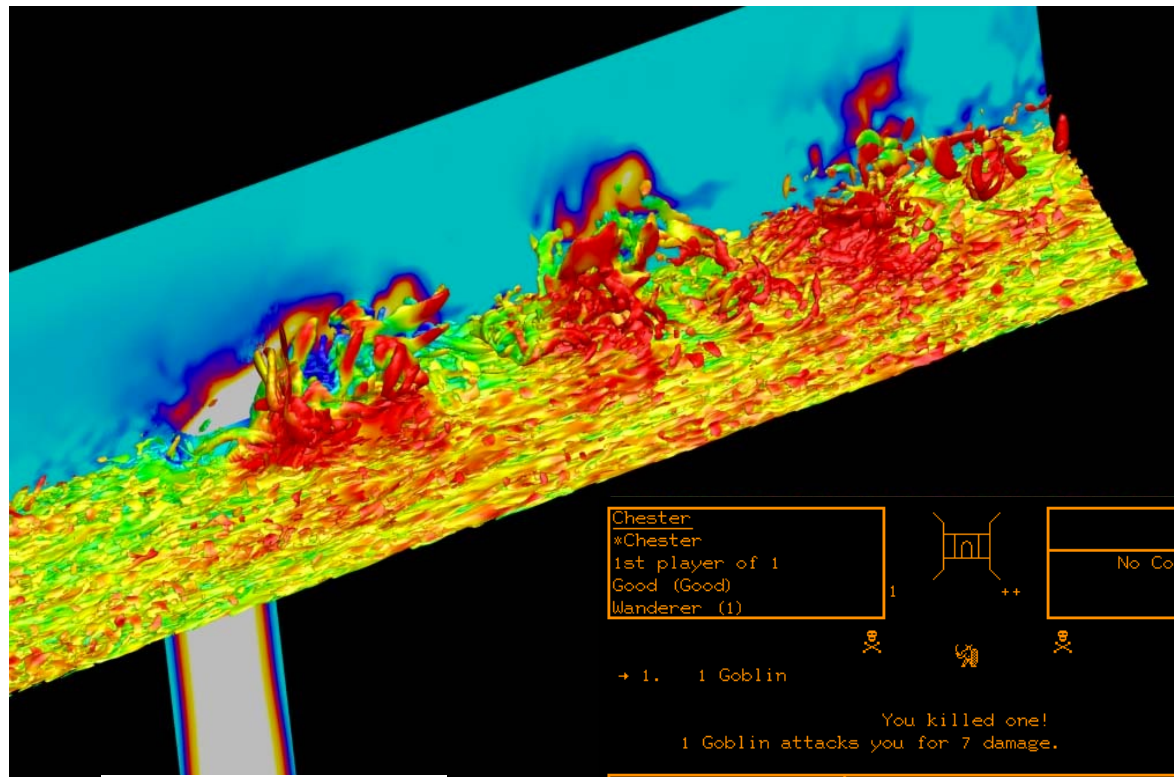
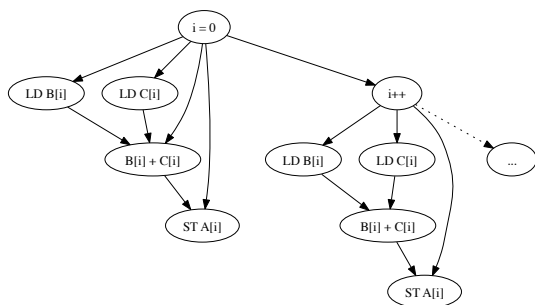
# CS 225

## Data Structures

*January 18 – Introduction*

*Jeff Erickson - G Carl Evans - Brad Solomon*

# G Carl Evans



Chester  
 \*Chester  
 1st player of 1  
 Good (Good)  
 Wanderer (1)

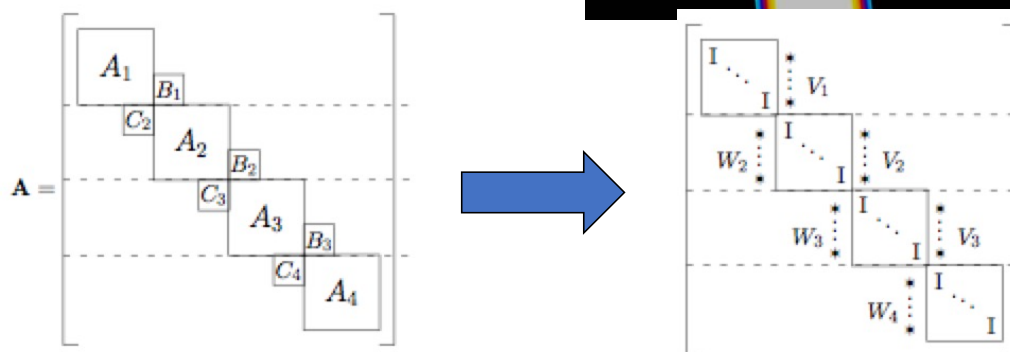
1

++

No Companions

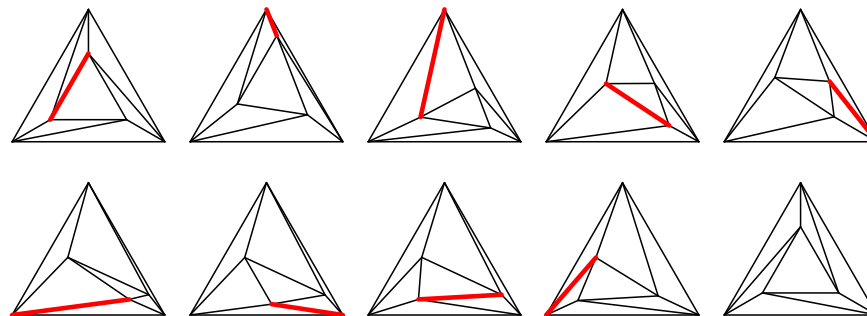
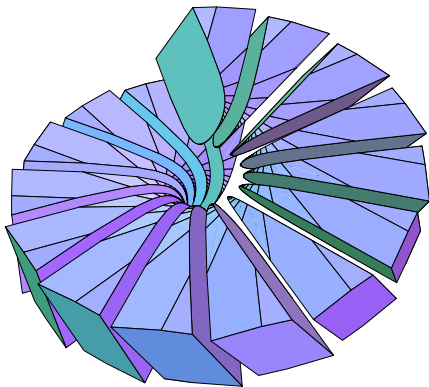
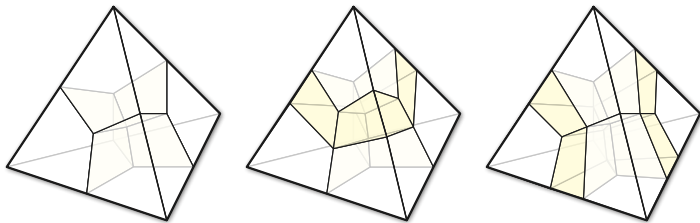
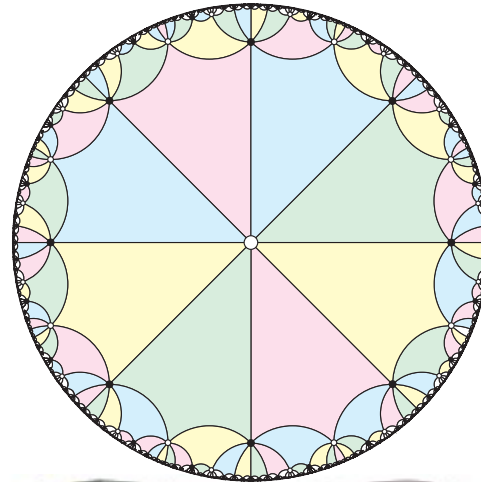
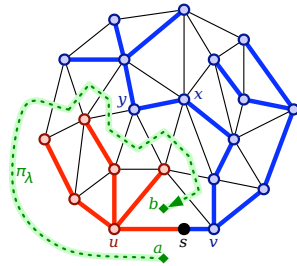
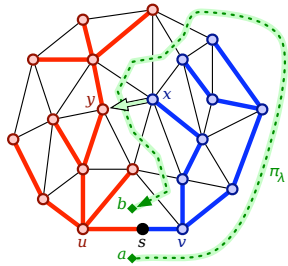
+ 1. 1 Goblin

You killed one!  
 1 Goblin attacks you for 7 damage.



Hits	1 / 10	1. Hands
Spells	42	2. Bronze Dagger
Spell level	1	3. Leather Armor
Att/Def	-5 / -2	4.
Exp	74	5.
Gold	281	6.
Age	16	7.
Ogre male		8.
Str	17	9.
Int	6	10.
Wis	6	11.
Con	15	12.
Cha	15	13.
Dex	16	14.

# Jeff Erickson



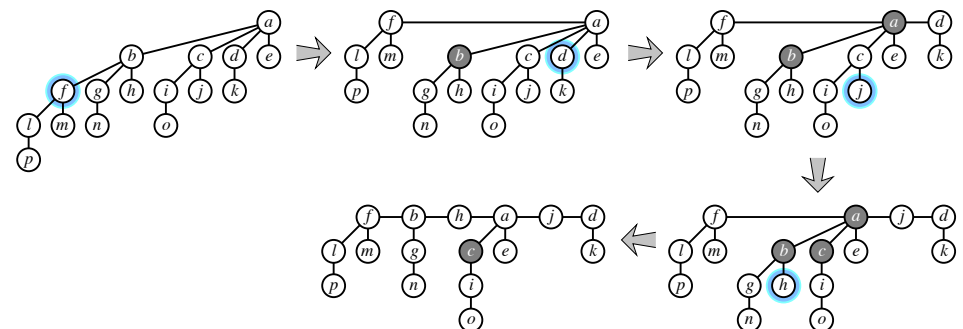
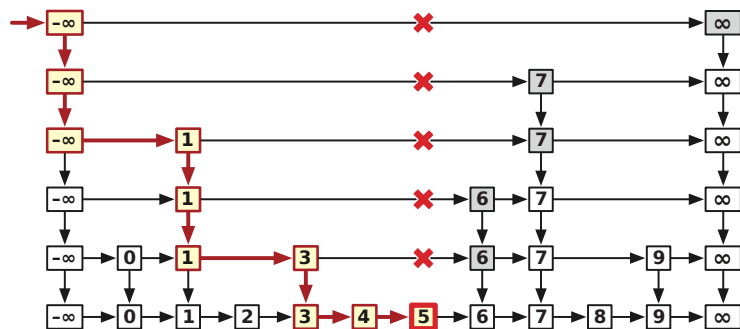
Algorithms



Theorie  
Learn

# CS 199-225: Data Structure Theory

- Data structures from a language-independent standpoint
- Techniques for design and analysis
  - Amortized, randomized, multilevel, competitive, kinetic, persistent, ...
- More advanced versions of data structures studied in the main class
  - Quacks, ropes, splay trees, scapegoat trees, skip lists, pairing heaps, ...
- No coding, but light written homework





# CS 199-225: Data Structure Theory

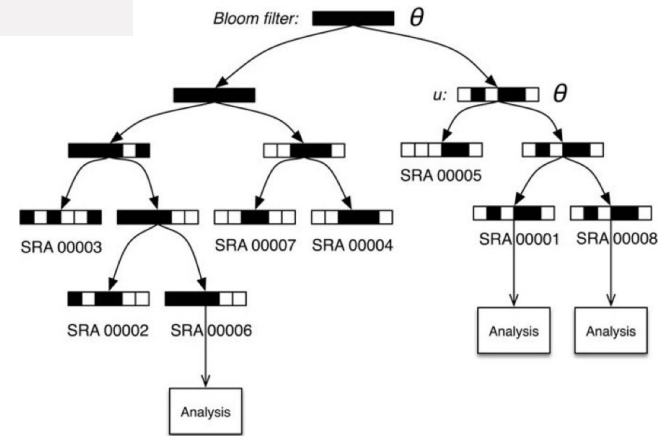
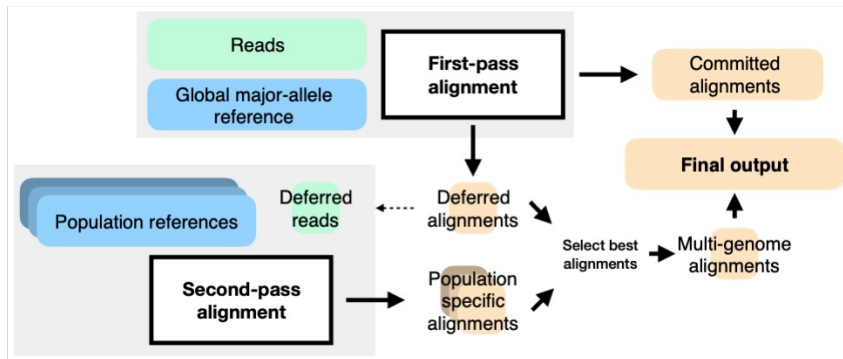
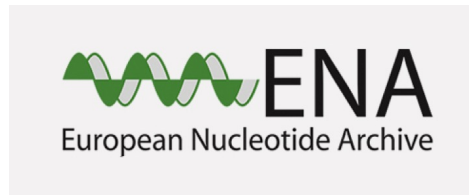
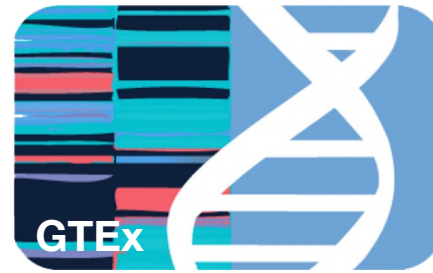
Course Schedule: Monday 5:00 — 5:50 PM

0216 Siebel Center for Computer Science

First class: January 29th

<https://courses.engr.illinois.edu/cs225/sp2024/pages/honors.html>

# Brad Solomon



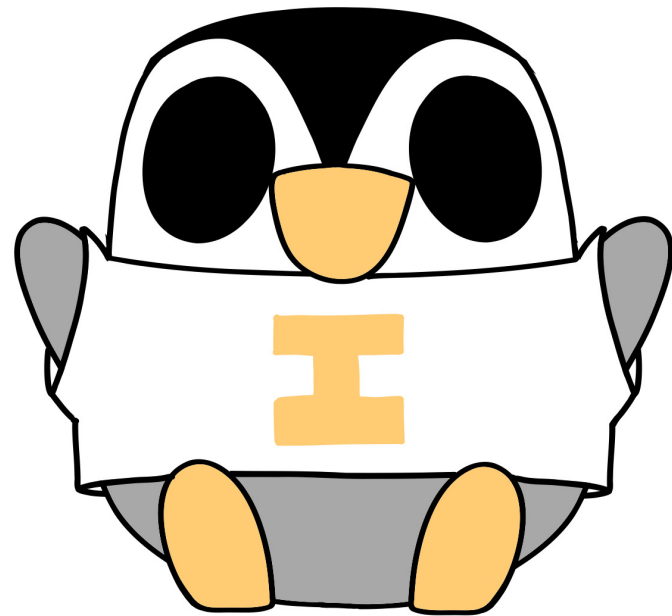
Fast search of thousands of short read sequencing experiments. Brad Solomon and Carl Kingsford. *Nature Biotech* 2016.

Reducing reference bias using multiple population reference genomes. Chen et al. *Genome Biology* 2021

Thierry  
Ramais

---





**CS225 STAFF**





# How to contact us?

- Admin Email

[cs225admin@lists.cs.illinois.edu](mailto:cs225admin@lists.cs.illinois.edu)

- Discord

<https://discord.gg/YuEwhnR>

Do not DM Staff on Discord!



ECE 220

CS 128

CS 225

CS 173

MATH 213



# Everything about CS 225

<https://courses.engr.illinois.edu/cs225/>

## Information on:

Staff

Communications

Lab Sections

MPs

Exams

Grading

Academic Integrity

# Grading Notes

Points	Grade	Points	Grade	Points	Grade
[930, $\infty$ )*	A+	[930, $\infty$ )*	A	[900, 930)	A-
[870, 900)	B+	[830, 870)	B	[800, 830)	B-
[770, 800)	C+	[730, 770)	C	[700, 730)	C-
[670, 700)	D+	[630, 670)	D	[600, 630)	D-
		(600, 0]	F		

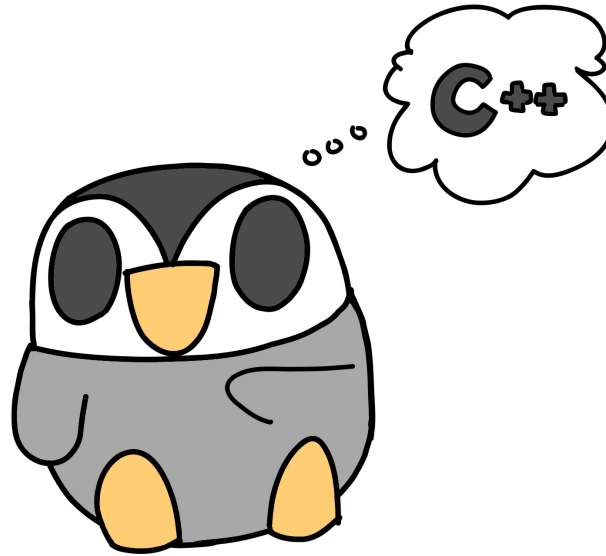
\* To get an A+ you need the score of 930 but you also need to have your final project or for some other work in this course to be seen as exceptional by course staff.



What is this course about?



# What about C++



Material from CS 128  
<https://learncpp.online/lessons>



# Problems of the Day (PotDs)



# Open Lab This Week

This week lab are open office hours to help you get your machine setup and can be reached at this link.

